

Floor Plans

Embark on a Journey of New Discoveries and Endless Memories



Designed for a contemporary lifestyle, Hillhaven offers a vibrant blend of private, spacious living with thoughtfully curated amenities.

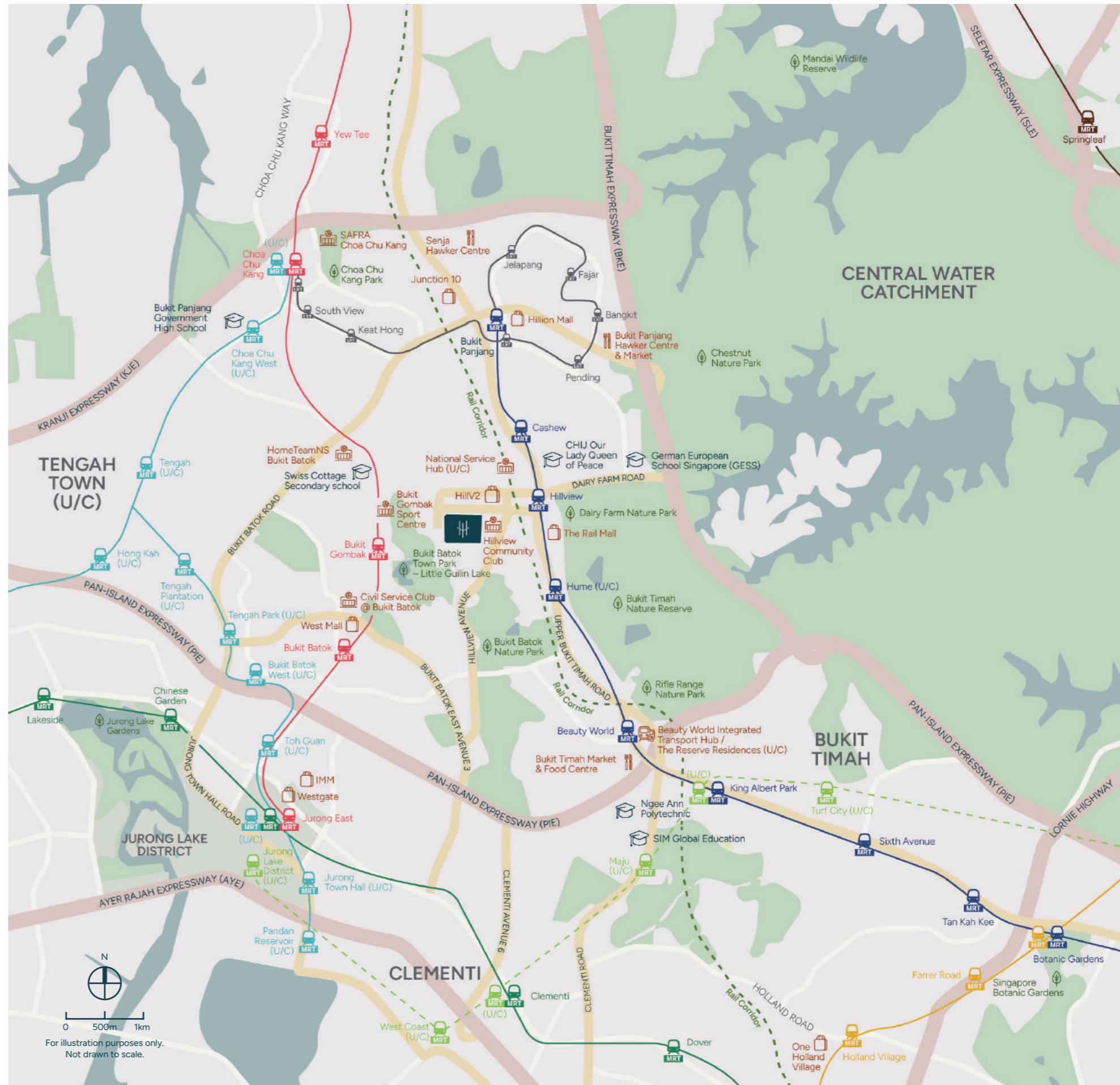
Whether you're creating new memories over conversations with neighbours and friends, or having a relaxing stroll at dusk with your family, Hillhaven is a place to unwind while enjoying everything life has to offer.

Enjoy Modern Comfort while Staying Accessible

At Hillhaven, you are surrounded by a variety of malls, recreational spaces, and parks, with plenty to enjoy. Well-connected by road and public transport, with 2 Integrated Transport Hubs – at Beauty World and Bukit Panjang within the vicinity, Hillhaven provides quick and convenient access to a growing network of businesses and several well-reputed educational institutes.

| | | |
|--|--|---|
| | <p>24km Rail Corridor Bukit Batok Nature Park Bukit Timah Nature Reserve Singapore Botanic Gardens</p> | <p>2 mins cycle / 4 mins walk 5 mins cycle / 4 mins drive 12 mins cycle / 6 mins drive 27 mins cycle / 15 mins drive</p> |
| | <p>Schools within 1km radius CHIJ Our Lady Queen of Peace Other reputable schools nearby Brighton Montessori @ Hillview St Francis Methodist School Swiss Cottage Secondary School Ngee Ann Polytechnic SIM Global Education Bukit Panjang Government High School National University of Singapore</p> | <p>within 1km radius 1 min walk 6 mins walk 6 mins drive 8 mins drive 8 mins drive 10 mins drive 14 mins drive</p> |
| | <p>HillV2 The Rail Mall Hillion Mall Bukit Panjang Hawker Centre and Market Bukit Timah Market & Food Centre IMM One Holland Village</p> | <p>1 min walk 10 mins walk 6 mins drive 6 mins drive 7 mins drive 8 mins drive 15 mins drive</p> |
| | <p>Hillview Community Club National Service (NS) Hub (U/C) Bukit Gombak Sports & Recreation Centre Civil Service Club @ Bukit Batok HomeTeamNS Bukit Batok SAFRA Choa Chu Kang</p> | <p>1 min walk 2 mins drive 5 mins drive 5 mins drive 7 mins drive 8 mins drive</p> |
| | <p>Hillview MRT Station Bukit Batok MRT Station Bukit Panjang Integrated Transport Hub Beauty World Integrated Transport Hub / The Reserve Residences (U/C)</p> | <p>4 mins walk 5 mins drive 2 MRT stops 2 MRT stops</p> |

All travelling time is approximate only and is taken from Hillhaven to the respective destinations.





Thoughtfully Curated Amenities to Elevate Contemporary Lifestyle Needs

Level 01

- 01 Main Entrance
- 02 Arrival Court
- 03 Tropical Palm Garden
- 04 Garden Pavilion
- 05 Exercise Lawn
- 06 Lobby Garden
- 07 Urban Farm
- 08 Ginger Garden
- 09 Garden Walk
- 10 Garden Alcove
- 11 Bikers' Corner
- 12 Bicycle Parking
- 13 Central Lawn
- 14 Side Entrance

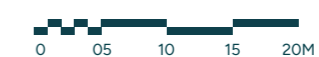
- A Guard House - Level 01
- B Refuse Chamber - Level 01
- C MDF Room - Level 01
- D Bin Centre - Level 01
- E Substation - Level 01
- F Generator Set - Level 01
- G Water Tanks - MSCP Lower 01 (Dotted Lines)
Water Tanks - Tower Blocks Roof (Dotted Lines)

Level 04

- 15 BBQ Pavilion 1
- 16 BBQ Pavilion 2
- 17 50m Pool
- 18 Outdoor Fitness
- 19 Pool Deck
- 20 Gym
- 21 Rock Climbing
- 22 Kids Pool
- 23 Children Playground
- 24 Pickleball Court
- 25 Changing & Steam Room
- 26 Function Room
- 27 Spa Tub
- 28 Spa Alcove
- 29 Lounge Deck
- 30 Floating Deck
- 31 AI Fresco Deck
- 32 Water Deck
- 33 Party Pavilion
- 34 Reading Corner

UNIT PLAN

- 2-Bedroom
- 2-Bedroom + Study
- 3-Bedroom
- 3-Bedroom + Study
- 4-Bedroom



Schematic Diagram

2-Bedroom
 2-Bedroom + Study
 3-Bedroom
 3-Bedroom + Study
 4-Bedroom

LEGEND

(P) PES Units
 (D) Double Volume
Only for living and dining areas
 # Visual Screens

| Unit/Level | 5 Hillview Rise | | | 5 Hillview Rise | | | |
|------------|-----------------|--------|-------|-----------------|------|------|------|
| | O3 | O2 | O1 | O4 | O5 | O6 | O7 |
| 27 | D1B(D) | B2A | C3(D) | B4B# | B1A# | B1B# | B4C# |
| 26 | D1B | B2A | C3 | B4B# | B1A# | B1B# | B4C# |
| 25 | D1B | B2A | C3 | B4B# | B1A# | B1B# | B4C# |
| 24 | D1B | B2A | C3 | B4B# | B1A# | B1B# | B4C# |
| 23 | D1B | B2A | C3 | B4B# | B1A# | B1B# | B4C# |
| 22 | D1B | B2A | C3 | B4B# | B1A# | B1B# | B4C# |
| 21 | D1B | B2A | C3 | B4B# | B1A# | B1B# | B4C# |
| 20 | D1B | B2A | C3 | B4B# | B1A# | B1B# | B4C# |
| 19 | D1B | B2A | C3 | B4B# | B1A# | B1B# | B4C# |
| 18 | D1B | B2A | C3 | B4B# | B1A# | B1B# | B4C# |
| 17 | D1B | B2A | C3 | B4B# | B1A# | B1B# | B4C# |
| 16 | D1B | B2A | C3 | B4B# | B1A# | B1B# | B4C# |
| 15 | D1B | B2A | C3 | B4B# | B1A# | B1B# | B4C# |
| 14 | D1B | B2A | C3 | B4B# | B1A# | B1B# | B4C# |
| 13 | D1B | B2A | C3 | B4B# | B1A# | B1B# | B4C# |
| 12 | D1A | B2A | C3 | B4A | B1A | B1B | B4C |
| 11 | D1A | B2A | C3 | B4A | B1A | B1B | B4C |
| 10 | D1A | B2A | C3 | B4A | B1A | B1B | B4C |
| 9 | D1A | B2A | C3 | B4A | B1A | B1B | B4C |
| 8 | D1A | B2A | C3 | B4A | B1A | B1B | B4C |
| 7 | D1A | B2A | C3 | B4A | B1A | B1B | B4C |
| 6 | D1A | B2A | C3 | B4A | B1A | B1B | B4C |
| 5 | D1A | B2A | C3 | B4A | B1A | B1B | |
| 4 | D1A | B2A | C3 | B4A | B1A | B1B | |
| 3 | D1A | B2A | C3 | B4A | B1A | B1B | |
| 2 | D1A | B2A | C3 | B4A | B1A | B1B | |
| 1 | | B2A(P) | C3(P) | | | | |

| Unit/Level | 7 Hillview Rise | | | 7 Hillview Rise | | |
|------------|-----------------|-----|--------|-----------------|--------|-------|
| | 11 | 12 | 13 | 10 | 09 | 08 |
| 28 | C2(D)# | B3# | C1(D)# | C4(D) | B2B | D2(D) |
| 27 | C2# | B3# | C1# | C4 | B2B | D2 |
| 26 | C2# | B3# | C1# | C4 | B2B | D2 |
| 25 | C2# | B3# | C1# | C4 | B2B | D2 |
| 24 | C2# | B3# | C1# | C4 | B2B | D2 |
| 23 | C2# | B3# | C1# | C4 | B2B | D2 |
| 22 | C2# | B3# | C1# | C4 | B2B | D2 |
| 21 | C2# | B3# | C1# | C4 | B2B | D2 |
| 20 | C2# | B3# | C1# | C4 | B2B | D2 |
| 19 | C2# | B3# | C1# | C4 | B2B | D2 |
| 18 | C2# | B3# | C1# | C4 | B2B | D2 |
| 17 | C2# | B3# | C1# | C4 | B2B | D2 |
| 16 | C2# | B3# | C1# | C4 | B2B | D2 |
| 15 | C2# | B3# | C1# | C4 | B2B | D2 |
| 14 | C2# | B3# | C1# | C4 | B2B | D2 |
| 13 | C2# | B3# | C1# | C4 | B2B | D2 |
| 12 | C2 | B3 | C1 | C4 | B2B | D2 |
| 11 | C2 | B3 | C1 | C4 | B2B | D2 |
| 10 | C2 | B3 | C1 | C4 | B2B | D2 |
| 9 | C2 | B3 | C1 | C4 | B2B | D2 |
| 8 | C2 | B3 | C1 | C4 | B2B | D2 |
| 7 | C2 | B3 | C1 | C4 | B2B | D2 |
| 6 | C2 | B3 | C1 | C4 | B2B | D2 |
| 5 | | B3 | C1 | C4 | B2B | D2 |
| 4 | | B3 | C1 | C4 | B2B | D2 |
| 3 | | B3 | C1 | C4 | B2B | D2 |
| 2 | | B3 | C1 | C4 | B2B | D2 |
| 1 | | | | C4(P) | B2B(P) | D2(P) |

2-Bedroom

Type B1A

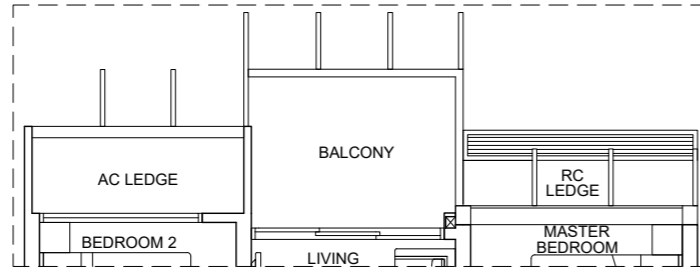
63 sqm / 678 sqft

Units (Without Visual Screenings)

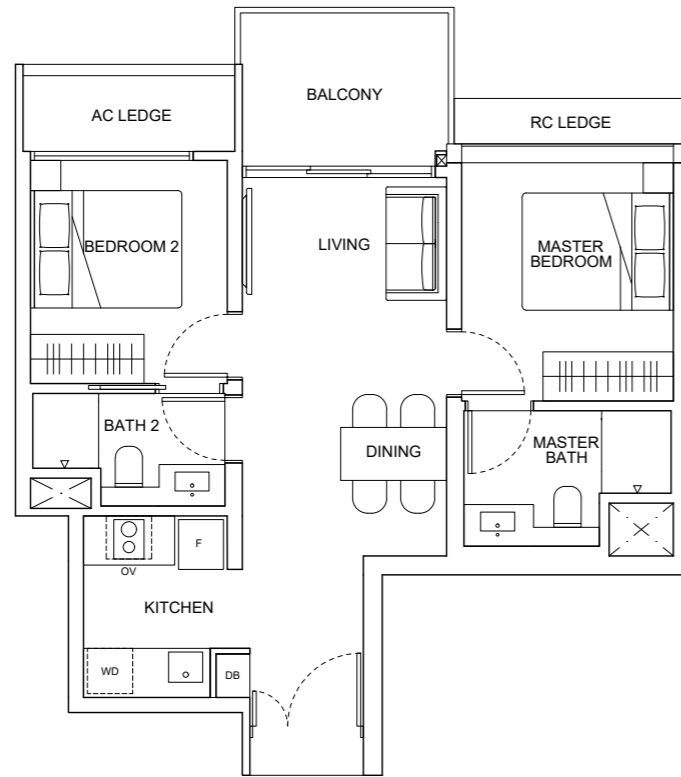
#02-05 to #12-05

Units (With Visual Screenings)

#13-05 to #27-05



Installed visual screenings for units at 13th sty and above



LEGEND

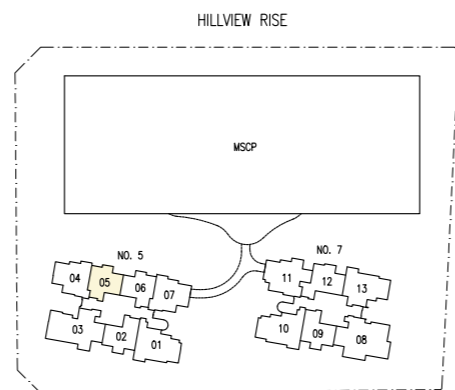
- DB Distribution Box
- F Fridge
- OV Oven
- WD Washer-Dryer



Disclaimer: The above plan is subject to any amendments as may be approved by the relevant authorities.



KEY PLAN
This key plan is not to scale



2-Bedroom

Type B1B

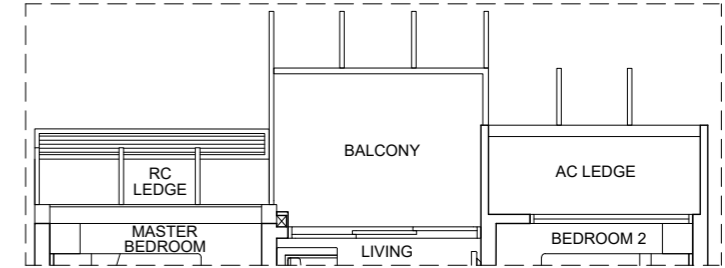
63 sqm / 678 sqft

Units (Without Visual Screenings)

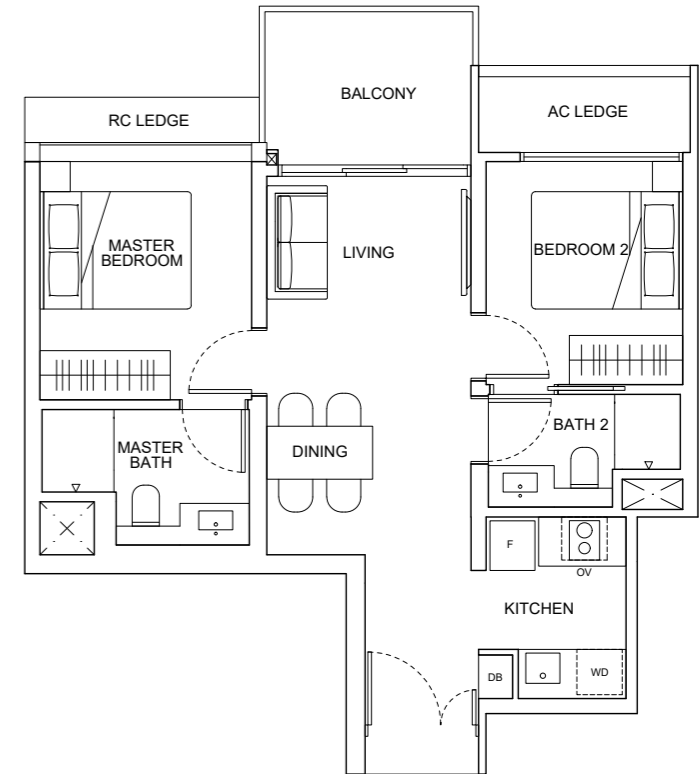
#02-06 to #12-06

Units (With Visual Screenings)

#13-06 to #27-06



Installed visual screenings for units at 13th sty and above



LEGEND

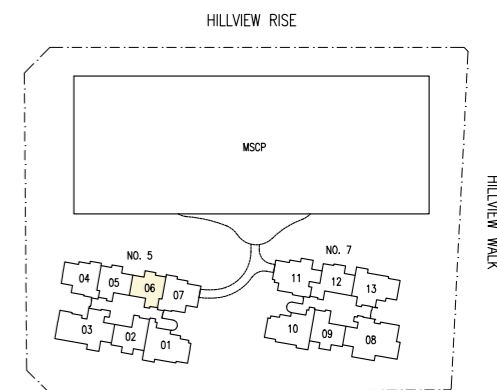
- DB Distribution Box
- F Fridge
- OV Oven
- WD Washer-Dryer



Disclaimer: The above plan is subject to any amendments as may be approved by the relevant authorities.



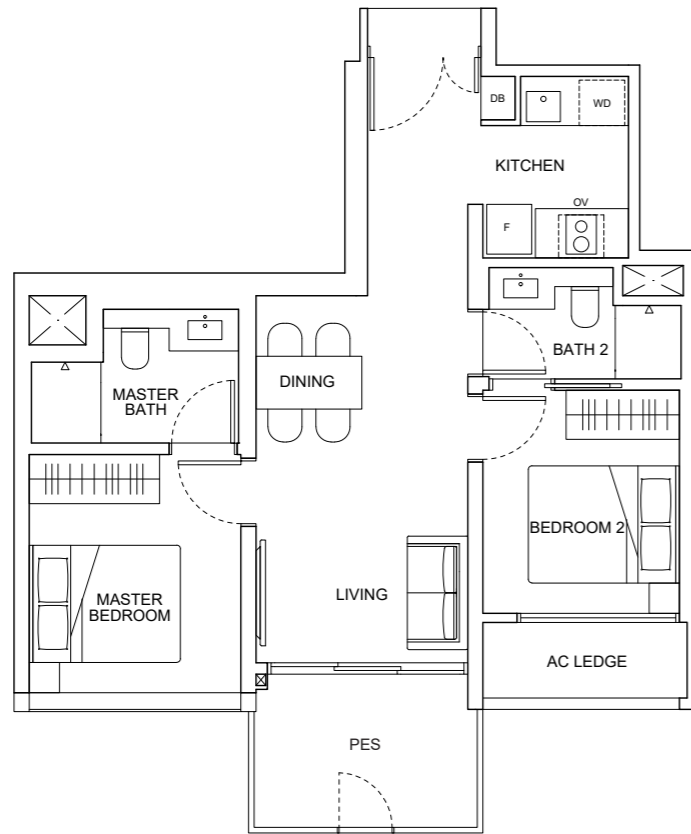
KEY PLAN
This key plan is not to scale



2-Bedroom

Type B2A(P)
65 sqm / 700 sqft

Units
#01-02



LEGEND

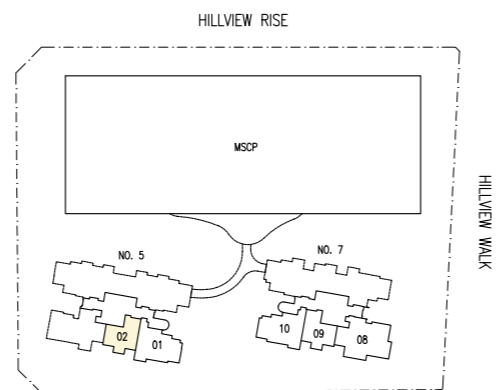
- DB Distribution Box
- F Fridge
- OV Oven
- WD Washer-Dryer



Disclaimer: The above plan is subject to any amendments as may be approved by the relevant authorities.



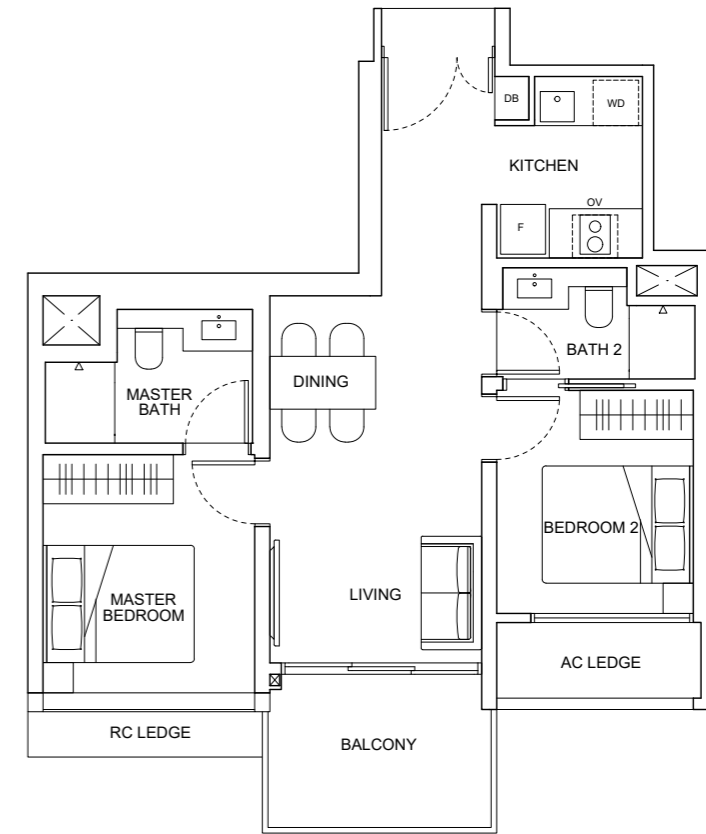
KEY PLAN
This key plan is not to scale



2-Bedroom

Type B2A
65 sqm / 700 sqft

Units
#02-02 to #27-02



LEGEND

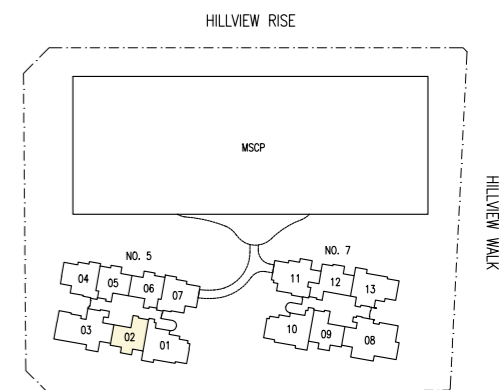
- DB Distribution Box
- F Fridge
- OV Oven
- WD Washer-Dryer



Disclaimer: The above plan is subject to any amendments as may be approved by the relevant authorities.



KEY PLAN
This key plan is not to scale



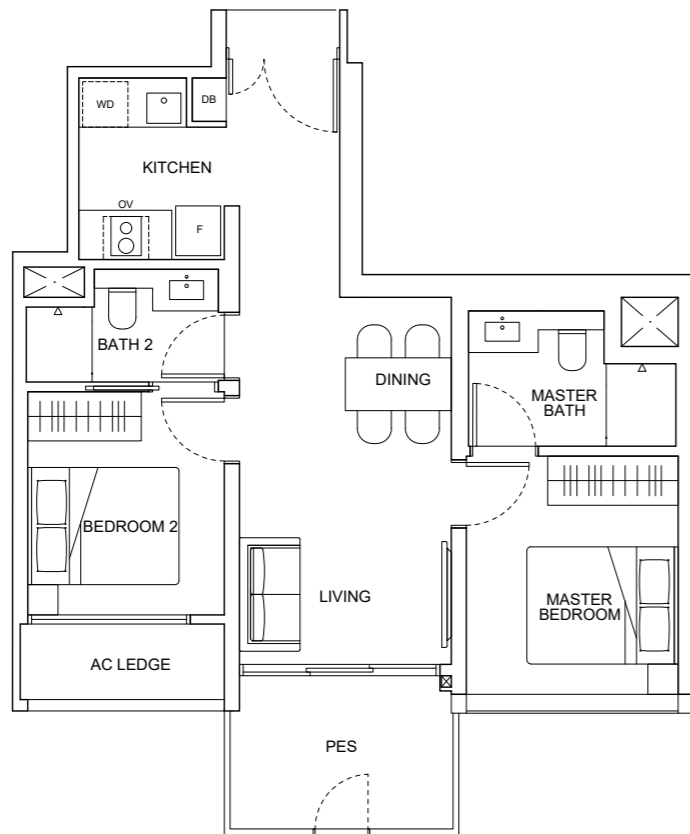
2-Bedroom

Type B2B(P)

65 sqm / 700 sqft

Units

#01-09



LEGEND

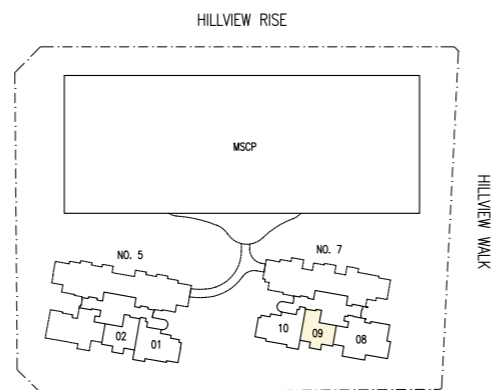
- DB Distribution Box
- F Fridge
- OV Oven
- WD Washer-Dryer



Disclaimer: The above plan is subject to any amendments as may be approved by the relevant authorities.



KEY PLAN
This key plan is not to scale



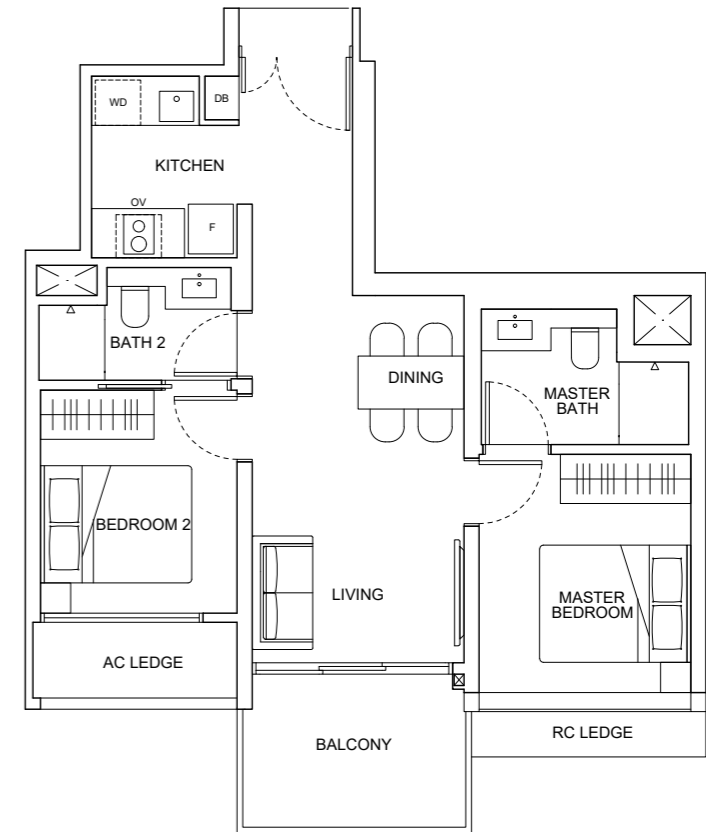
2-Bedroom

Type B2B

65 sqm / 700 sqft

Units

#02-09 to #28-09



LEGEND

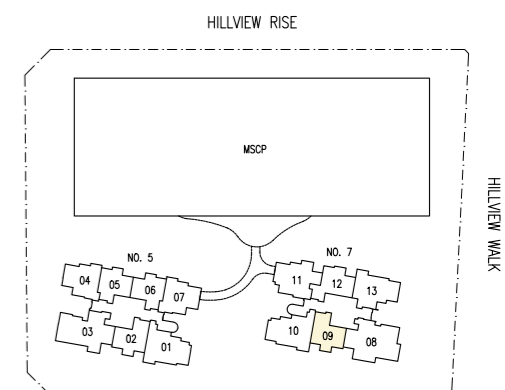
- DB Distribution Box
- F Fridge
- OV Oven
- WD Washer-Dryer



Disclaimer: The above plan is subject to any amendments as may be approved by the relevant authorities.



KEY PLAN
This key plan is not to scale



2-Bedroom

Type B3

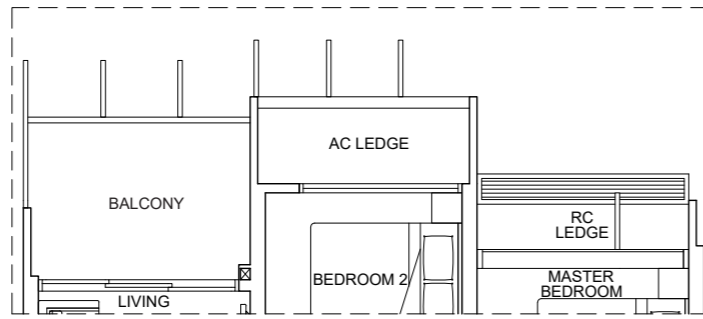
67 sqm / 721 sqft

Units (Without Visual Screenings)

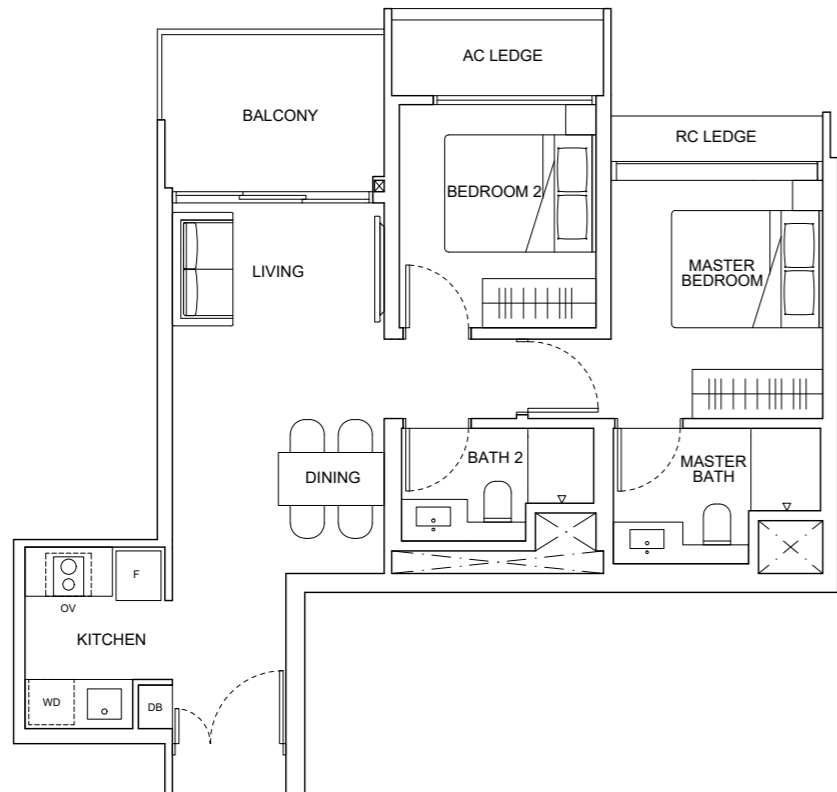
#02-12 to #12-12

Units (With Visual Screenings)

#13-12 to #28-12

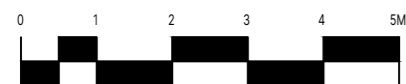


Installed visual screenings for units at 13th sty and above

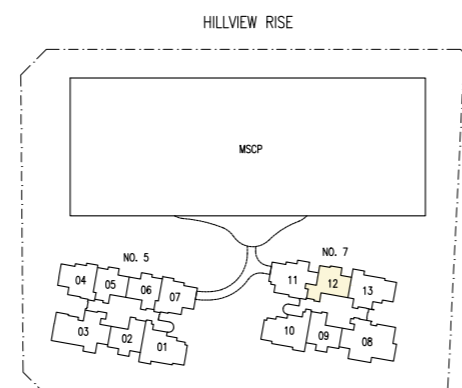


LEGEND

- DB Distribution Box
- F Fridge
- OV Oven
- WD Washer-Dryer



KEY PLAN
This key plan is not to scale



Disclaimer: The above plan is subject to any amendments as may be approved by the relevant authorities.

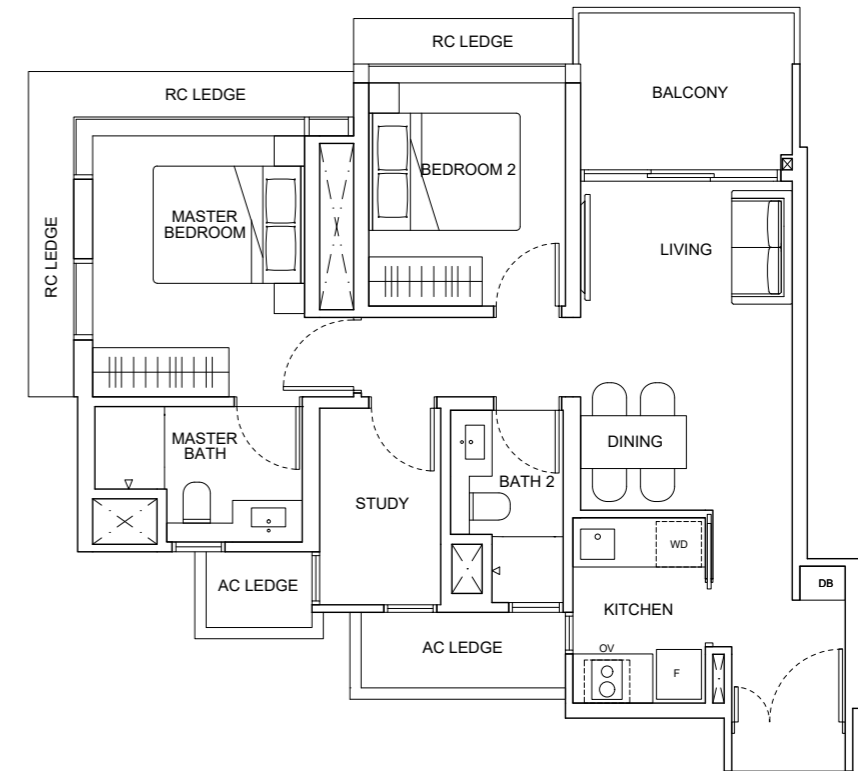
2-Bedroom + Study

Type B4A

74 sqm / 797 sqft

Units

#02-04 to #12-04

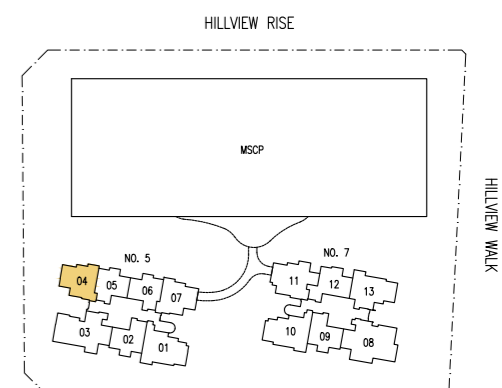


LEGEND

- DB Distribution Box
- F Fridge
- OV Oven
- WD Washer-Dryer



KEY PLAN
This key plan is not to scale



Disclaimer: The above plan is subject to any amendments as may be approved by the relevant authorities.

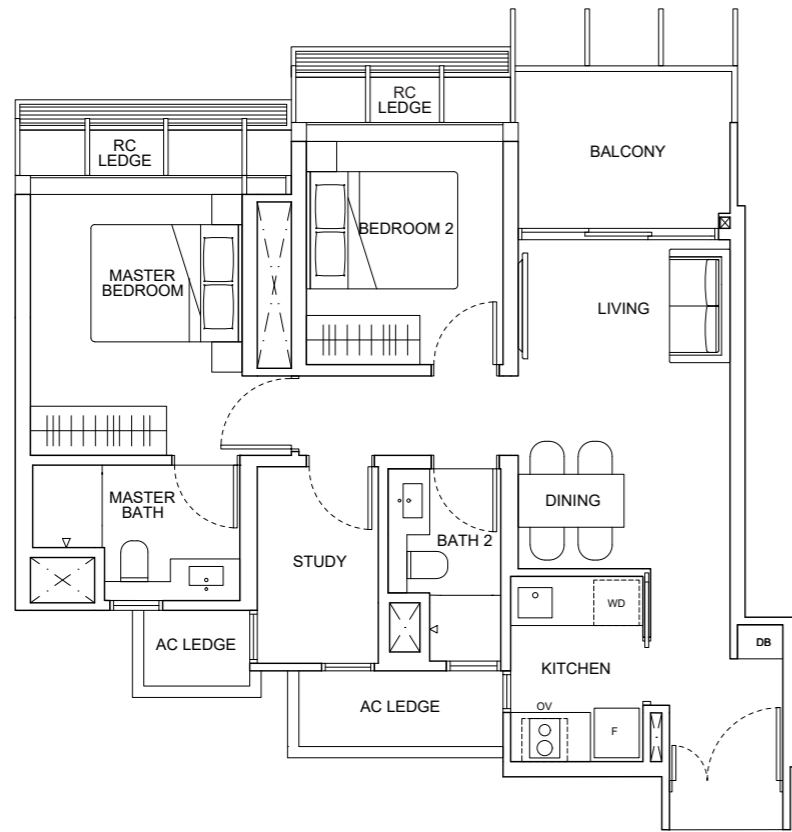
2-Bedroom + Study

Type B4B

74 sqm / 797 sqft

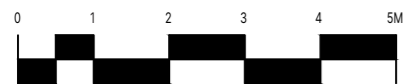
Units (With Visual Screenings)

#13-04 to #27-04



LEGEND

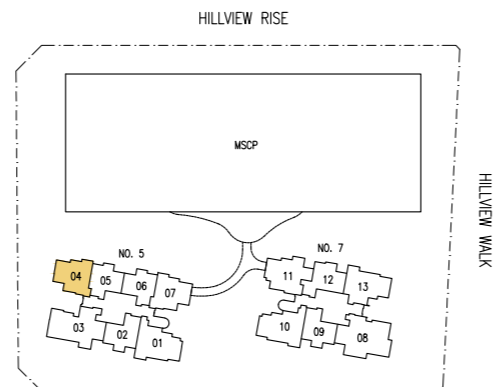
- DB Distribution Box
- F Fridge
- OV Oven
- WD Washer-Dryer



Disclaimer: The above plan is subject to any amendments as may be approved by the relevant authorities.



KEY PLAN
This key plan is not to scale



2-Bedroom + Study

Type B4C

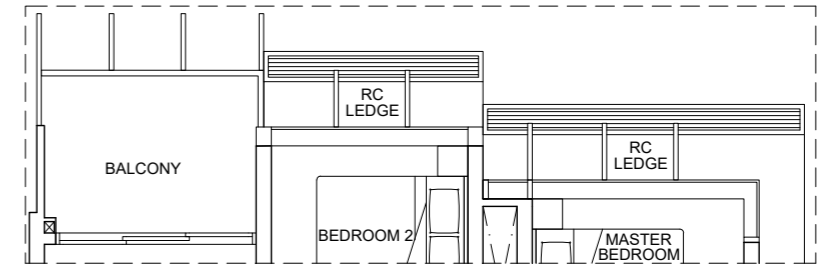
74 sqm / 797 sqft

Units (Without Visual Screenings)

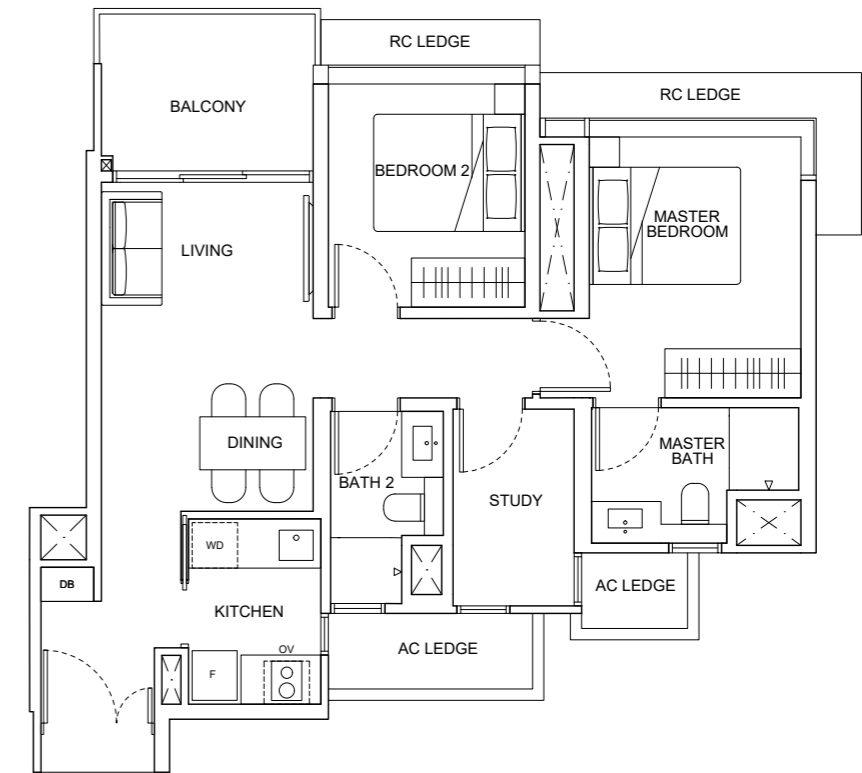
#06-07 to #12-07

Units (With Visual Screenings)

#13-07 to #27-07



Installed visual screenings for units at 13th sty and above



LEGEND

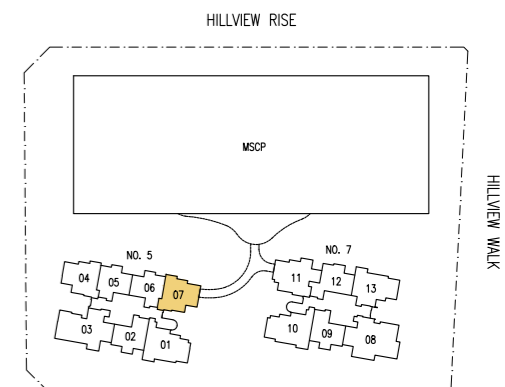
- DB Distribution Box
- F Fridge
- OV Oven
- WD Washer-Dryer



Disclaimer: The above plan is subject to any amendments as may be approved by the relevant authorities.



KEY PLAN
This key plan is not to scale



3-Bedroom

Type C1

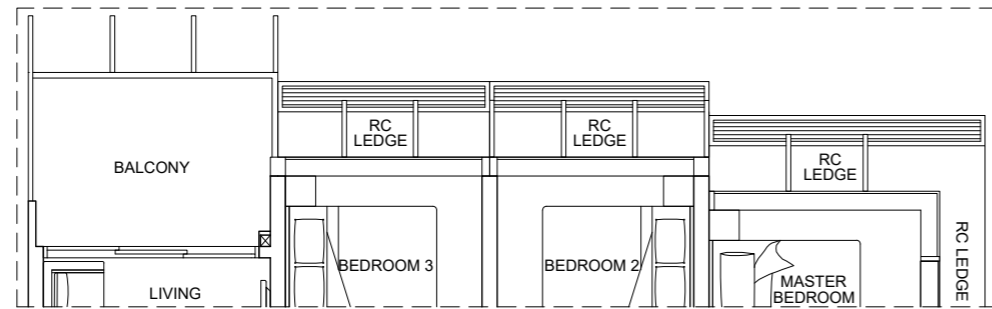
88 sqm / 947 sqft

Units (Without Visual Screenings)

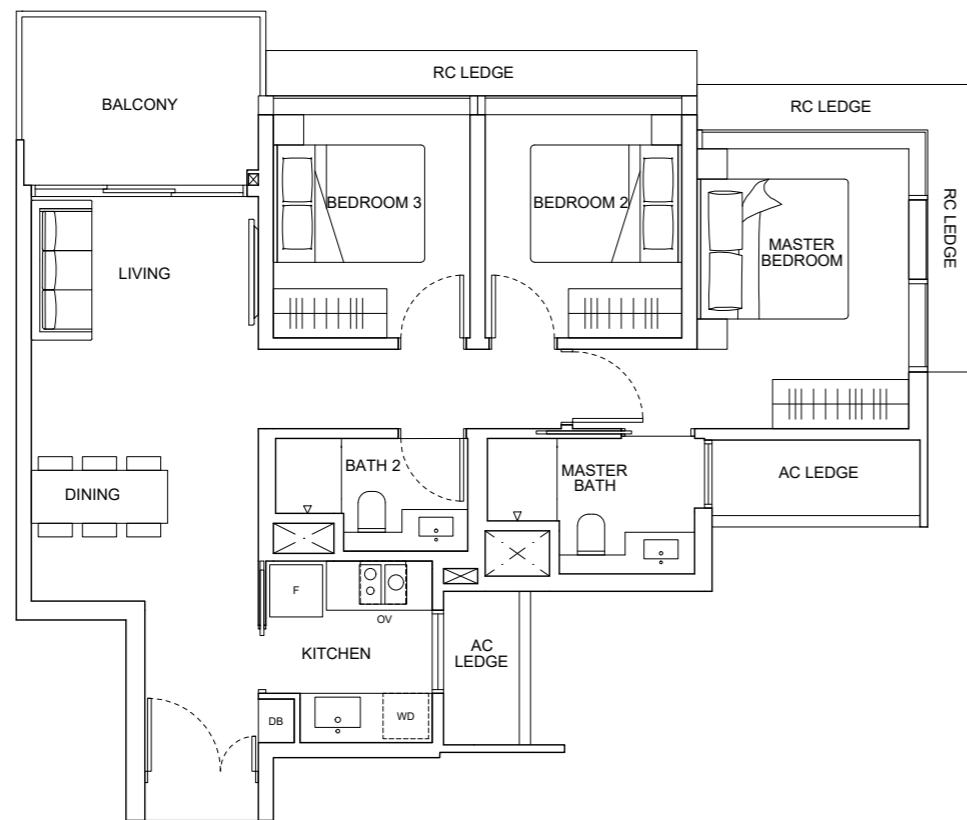
#02-13 to #12-13

Units (With Visual Screenings)

#13-13 to #27-13

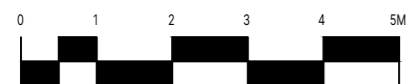


Installed visual screenings for units at 13th sty and above

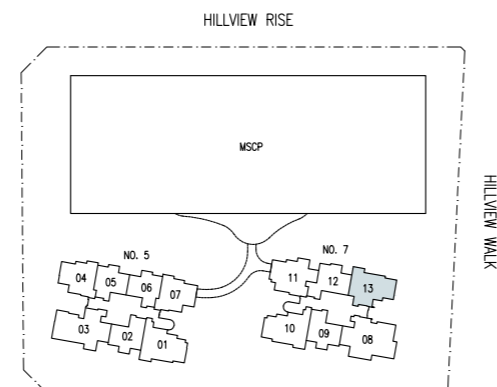


LEGEND

- DB Distribution Box
- F Fridge
- OV Oven
- WD Washer-Dryer



KEY PLAN
This key plan is not to scale



Disclaimer: The above plan is subject to any amendments as may be approved by the relevant authorities.

3-Bedroom

Type C1(D)

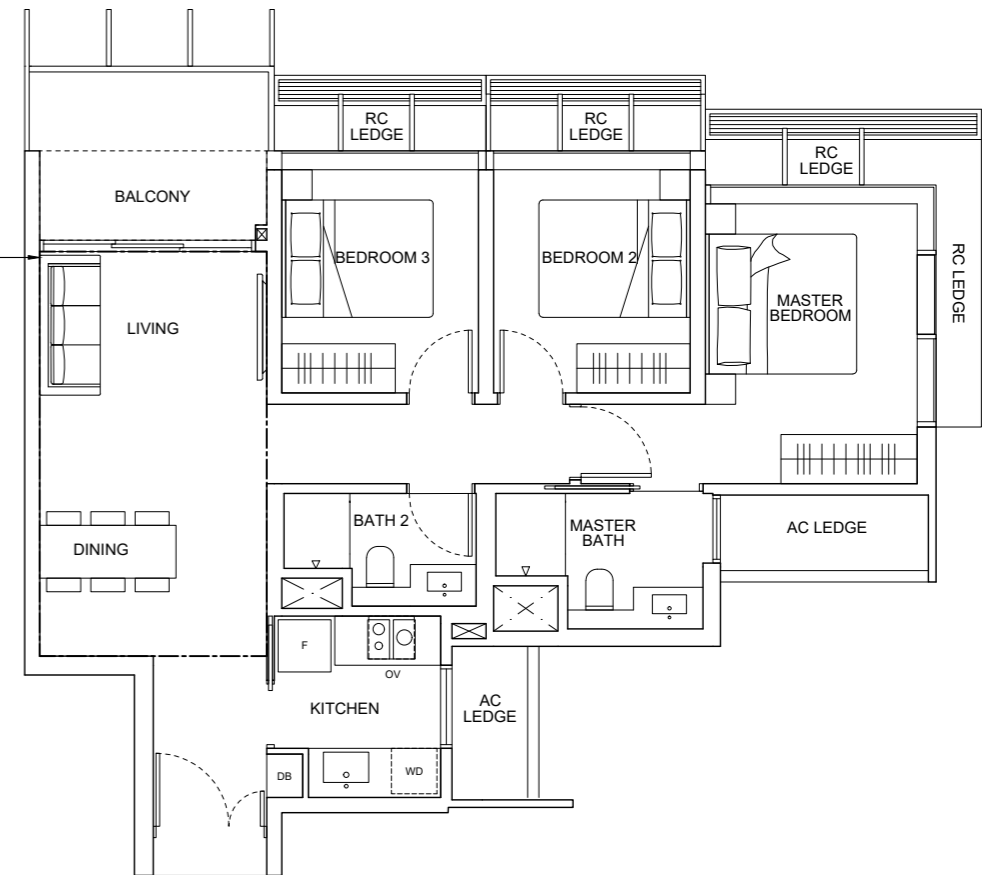
106 sqm / 1,141 sqft

Includes 16 sqm of strata void to living / dining with 4.5 m ceiling height

Units (With Visual Screenings)

#28-13

Denotes 16 sqm of strata void to living / dining with 4.5 m ceiling height

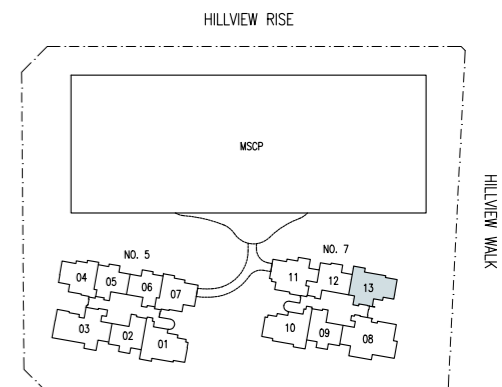


LEGEND

- DB Distribution Box
- F Fridge
- OV Oven
- WD Washer-Dryer



KEY PLAN
This key plan is not to scale



Disclaimer: The above plan is subject to any amendments as may be approved by the relevant authorities.

3-Bedroom + Study

Type C2

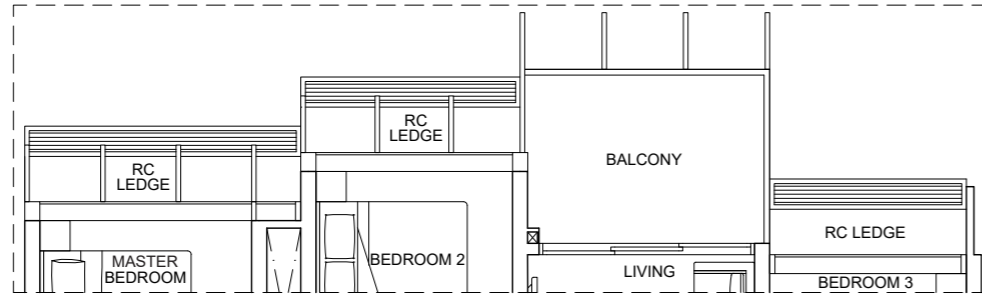
89 sqm / 958 sqft

Units (Without Visual Screenings)

#06-11 to #12-11

Units (With Visual Screenings)

#13-11 to #27-11



Installed visual screenings for units at 13th story and above

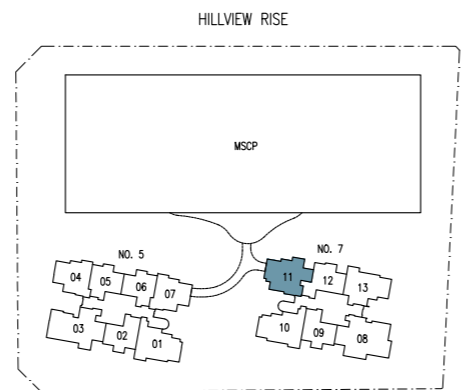


LEGEND

- DB Distribution Box
- F Fridge
- OV Oven
- WD Washer-Dryer



KEY PLAN
This key plan is not to scale



Disclaimer: The above plan is subject to any amendments as may be approved by the relevant authorities.

3-Bedroom + Study

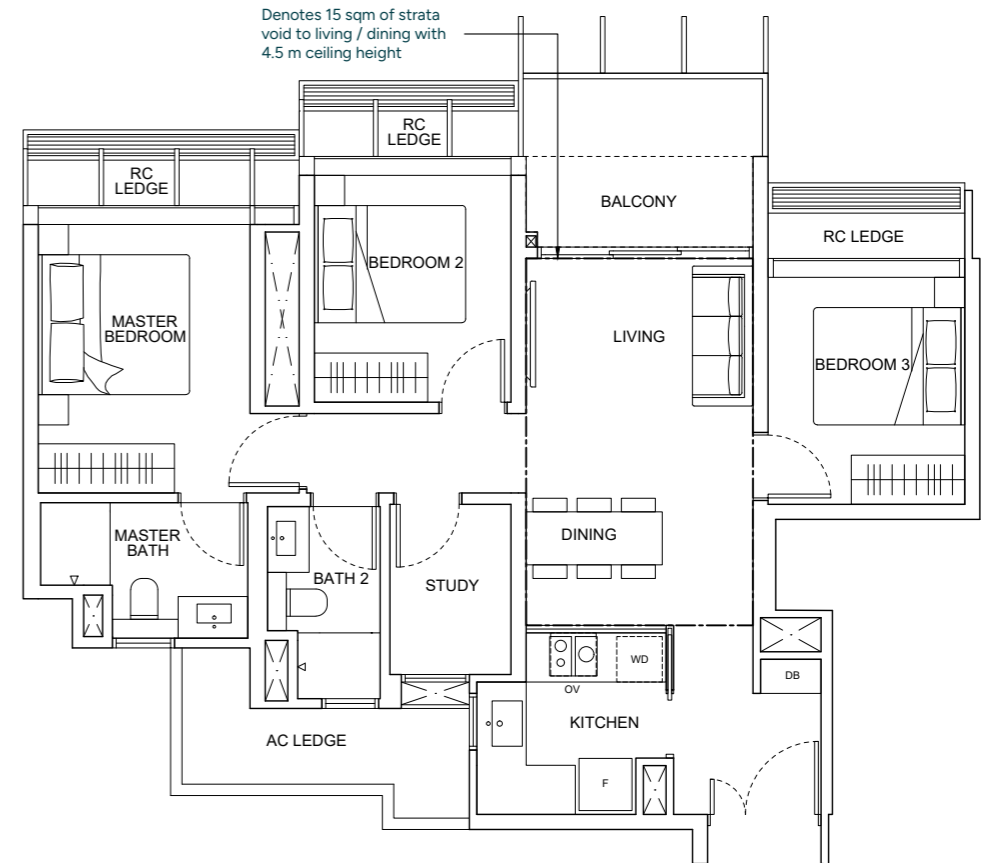
Type C2(D)

105 sqm / 1,130 sqft

Includes 15 sqm of strata void to living / dining with 4.5 m ceiling height

Units (With Visual Screenings)

#28-11

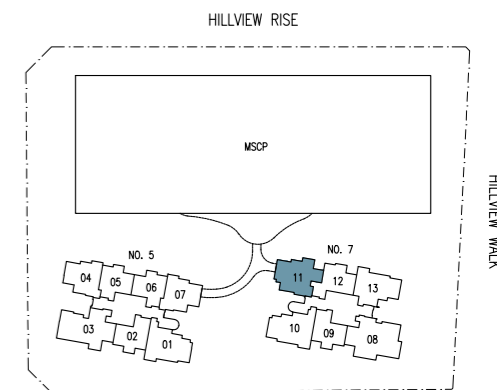


LEGEND

- DB Distribution Box
- F Fridge
- OV Oven
- WD Washer-Dryer



KEY PLAN
This key plan is not to scale

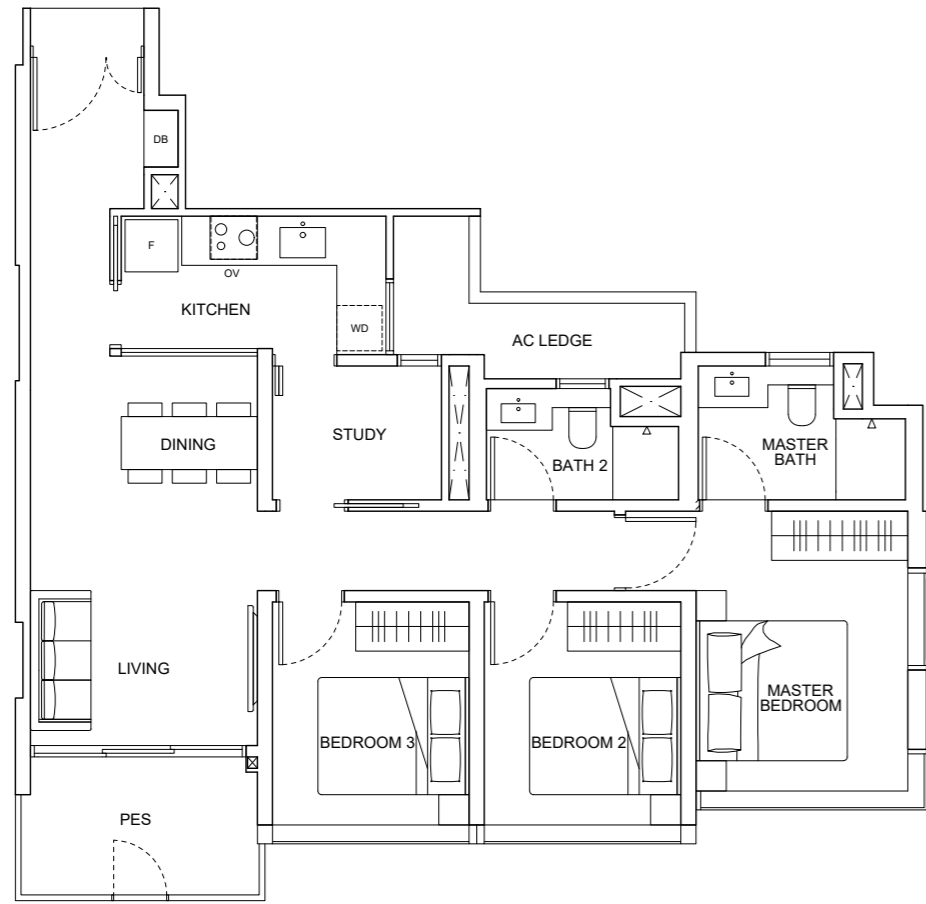


Disclaimer: The above plan is subject to any amendments as may be approved by the relevant authorities.

3-Bedroom + Study

Type C3(P)
94 sqm / 1,012 sqft

Units
#01-01



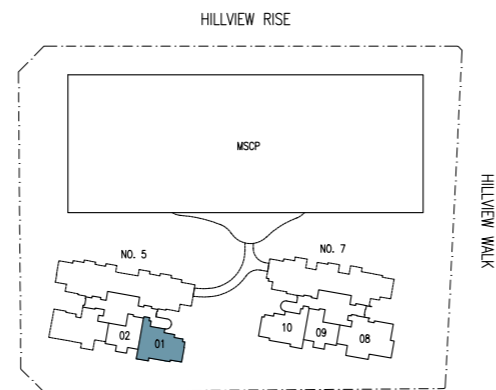
LEGEND

- DB Distribution Box
- F Fridge
- OV Oven
- WD Washer-Dryer



KEY PLAN
This key plan is not to scale

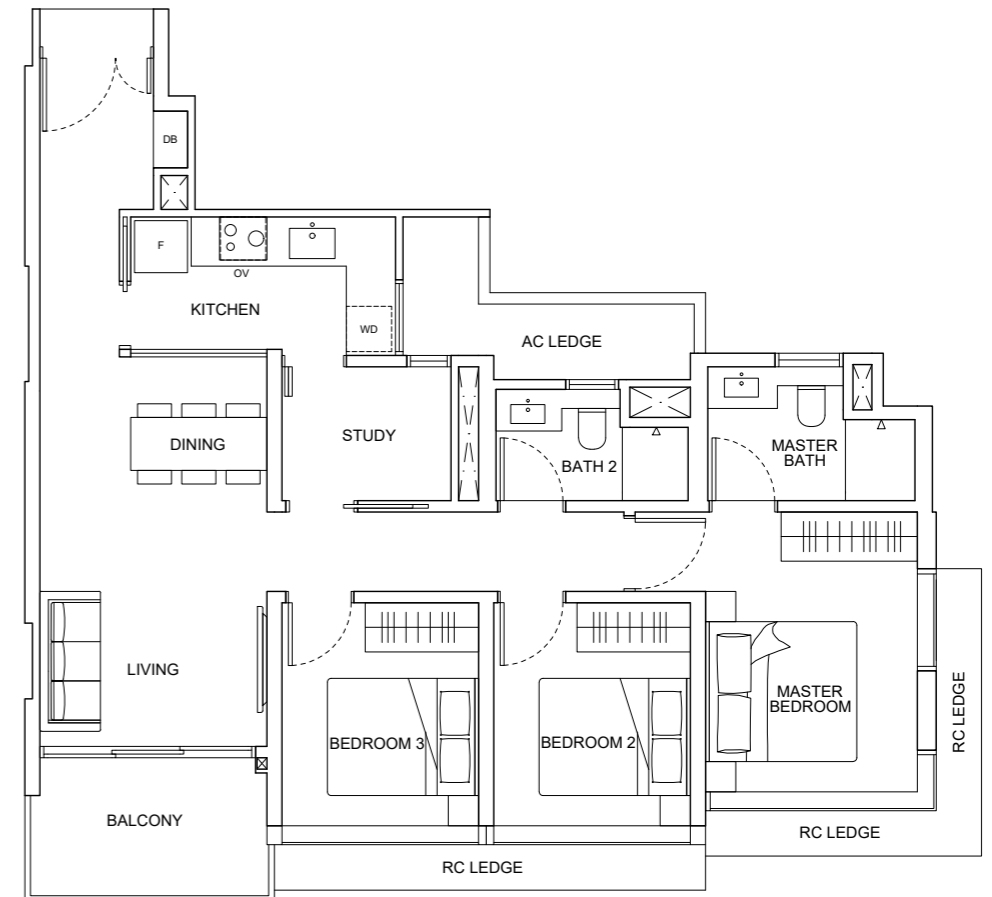
Disclaimer: The above plan is subject to any amendments as may be approved by the relevant authorities.



3-Bedroom + Study

Type C3
94 sqm / 1,012 sqft

Units
#02-01 to #26-01



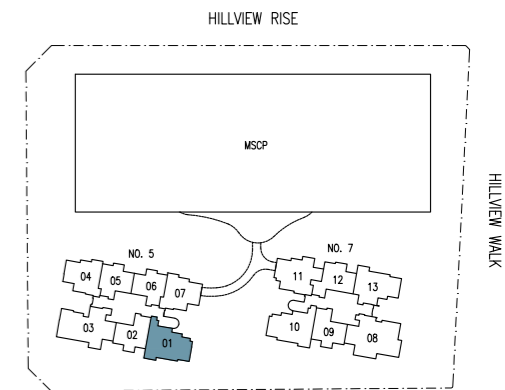
LEGEND

- DB Distribution Box
- F Fridge
- OV Oven
- WD Washer-Dryer



KEY PLAN
This key plan is not to scale

Disclaimer: The above plan is subject to any amendments as may be approved by the relevant authorities.

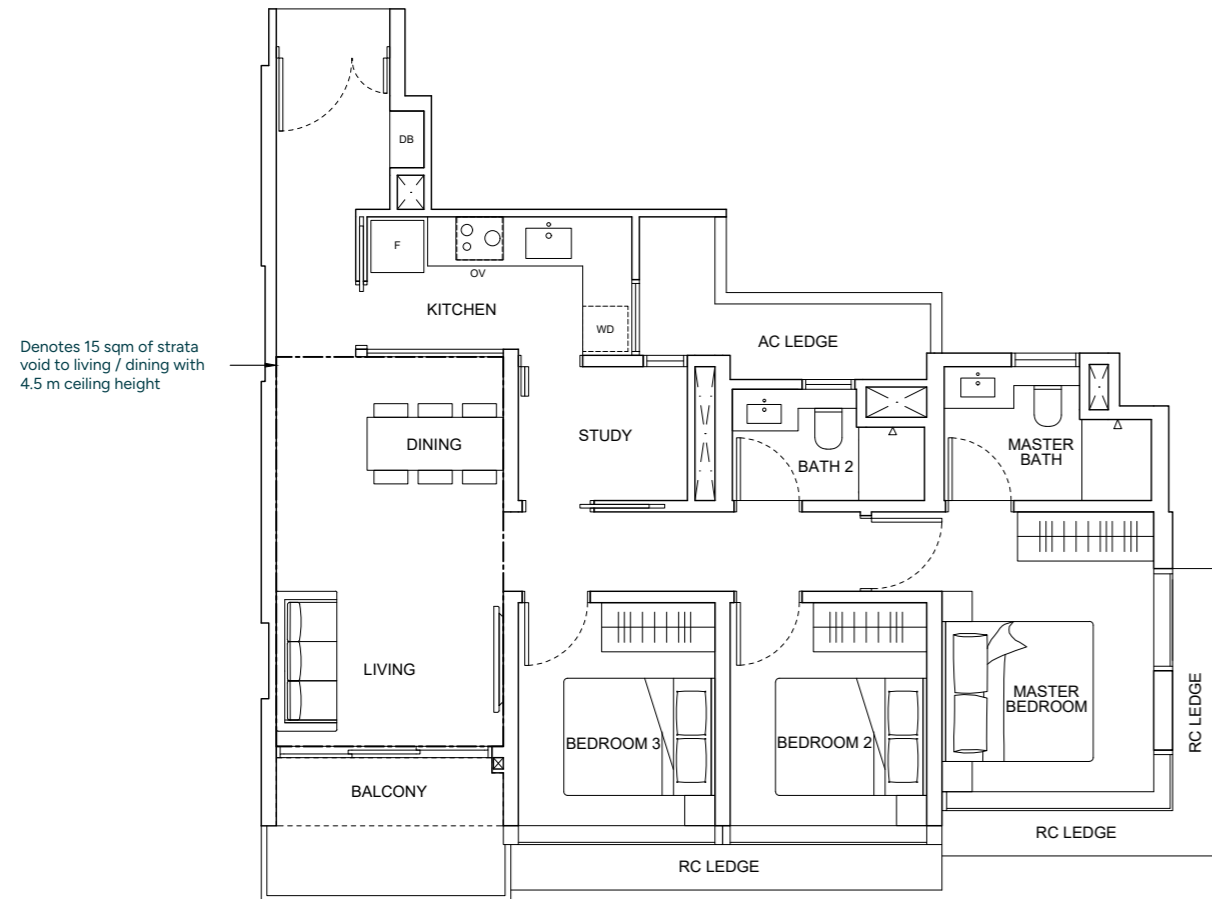


3-Bedroom + Study

Type C3(D)

111 sqm / 1,195 sqft
Includes 15 sqm of strata void to living / dining with 4.5 m ceiling height

Units
#27-01



LEGEND

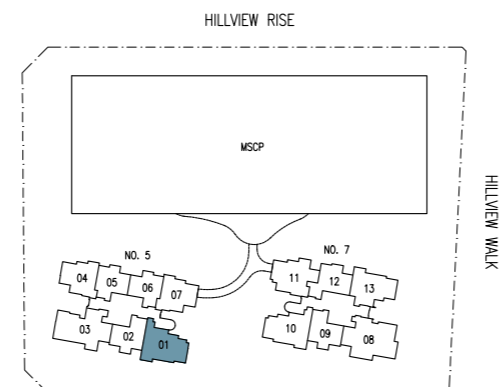
- DB Distribution Box
- F Fridge
- OV Oven
- WD Washer-Dryer



Disclaimer: The above plan is subject to any amendments as may be approved by the relevant authorities.



KEY PLAN
This key plan is not to scale

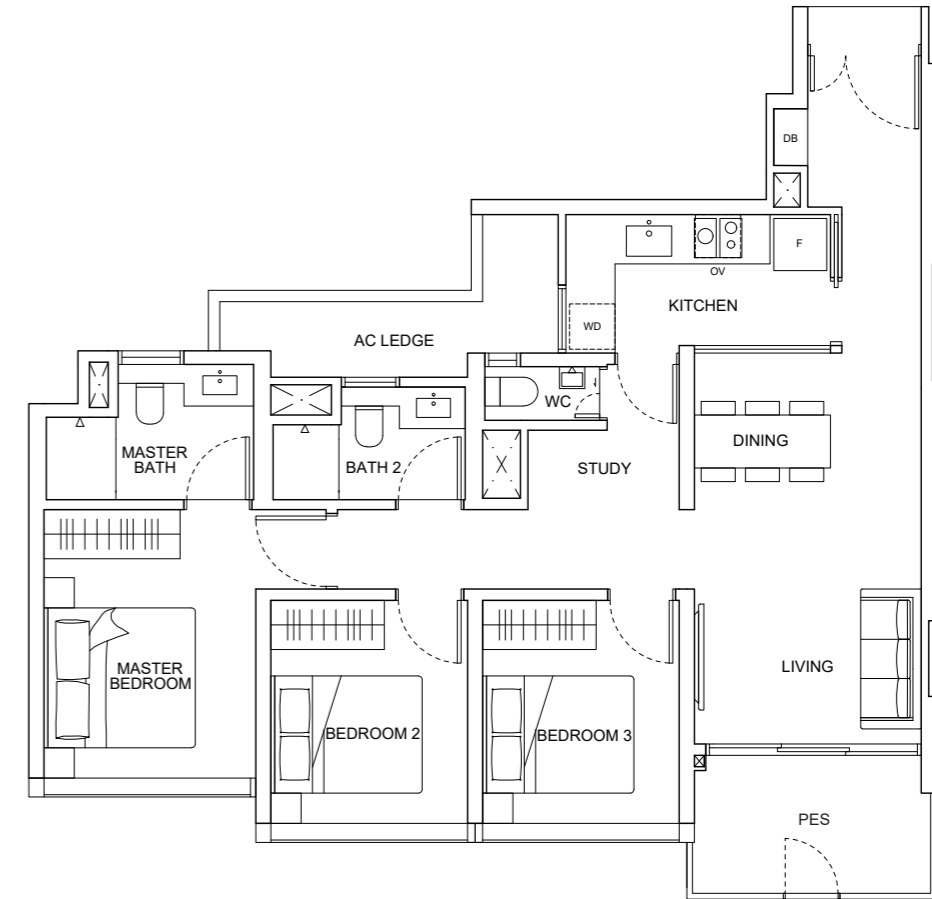


3-Bedroom + Study

Type C4(P)

94 sqm / 1,012 sqft

Units
#01-10



LEGEND

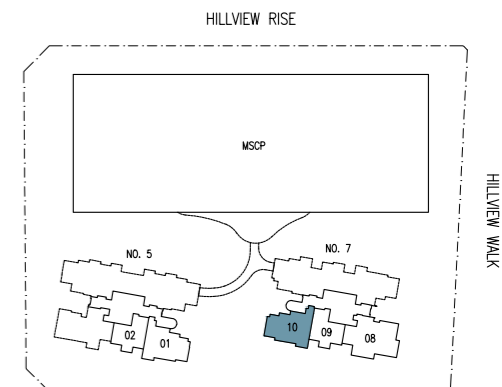
- DB Distribution Box
- F Fridge
- OV Oven
- WD Washer-Dryer



Disclaimer: The above plan is subject to any amendments as may be approved by the relevant authorities.



KEY PLAN
This key plan is not to scale



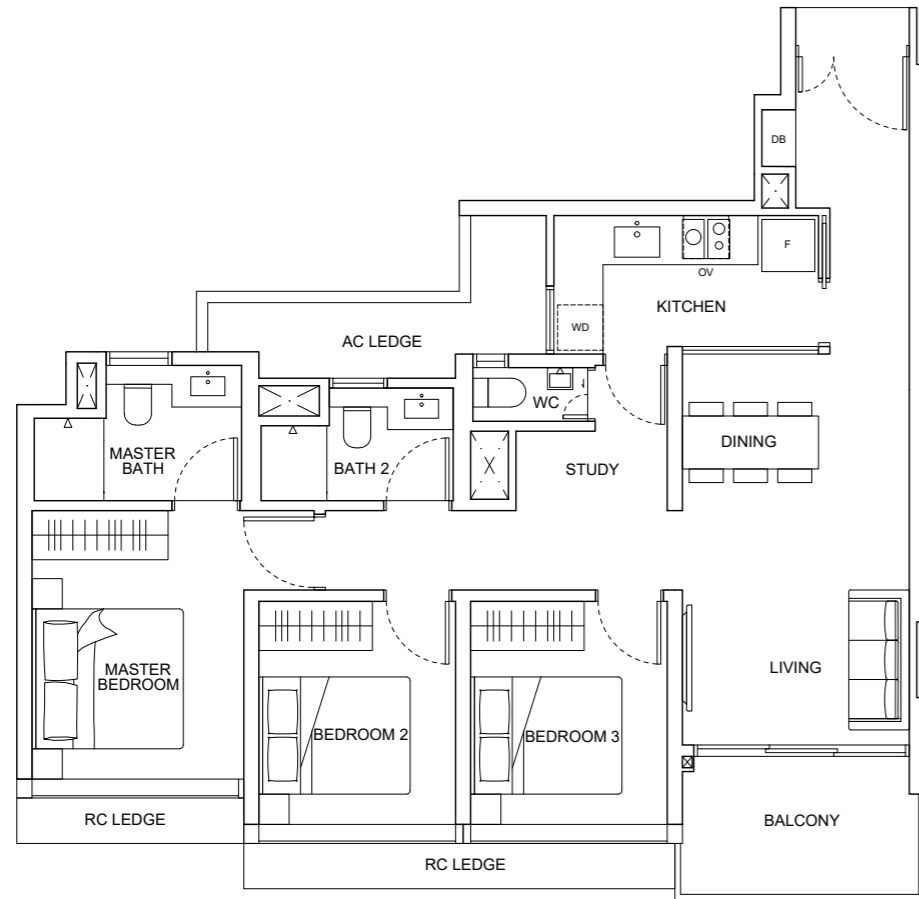
3-Bedroom + Study

Type C4

94 sqm / 1,012 sqft

Units

#02-10 to #27-10



LEGEND

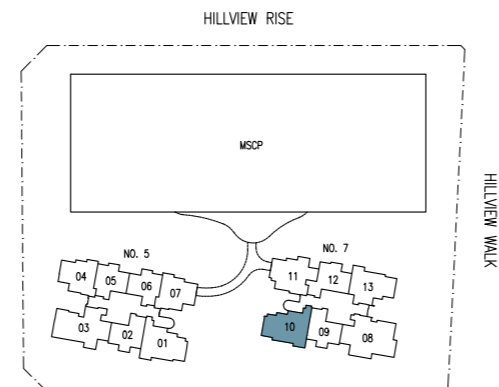
- DB Distribution Box
- F Fridge
- OV Oven
- WD Washer-Dryer



Disclaimer: The above plan is subject to any amendments as may be approved by the relevant authorities.



KEY PLAN
This key plan is not to scale



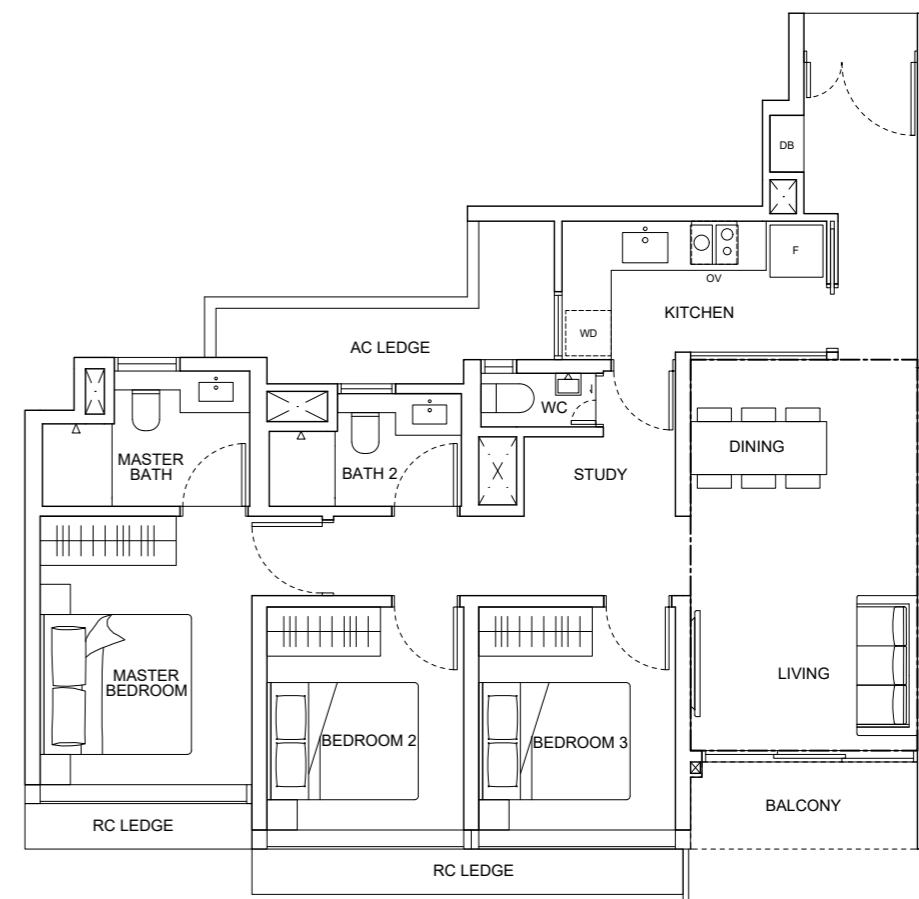
3-Bedroom + Study

Type C4(D)

111 sqm / 1,195 sqft
Includes 16 sqm of strata void to living / dining with 4.5 m ceiling height

Units

#28-10



Denotes 16 sqm of strata void to living / dining with 4.5 m ceiling height

LEGEND

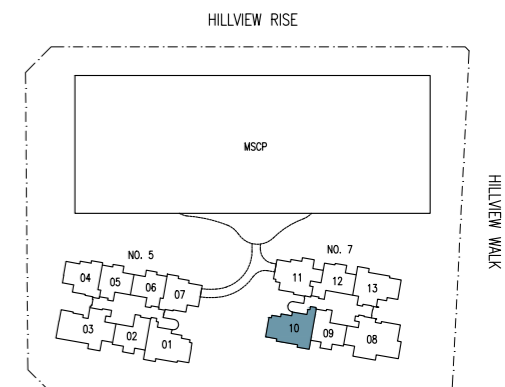
- DB Distribution Box
- F Fridge
- OV Oven
- WD Washer-Dryer



Disclaimer: The above plan is subject to any amendments as may be approved by the relevant authorities.



KEY PLAN
This key plan is not to scale



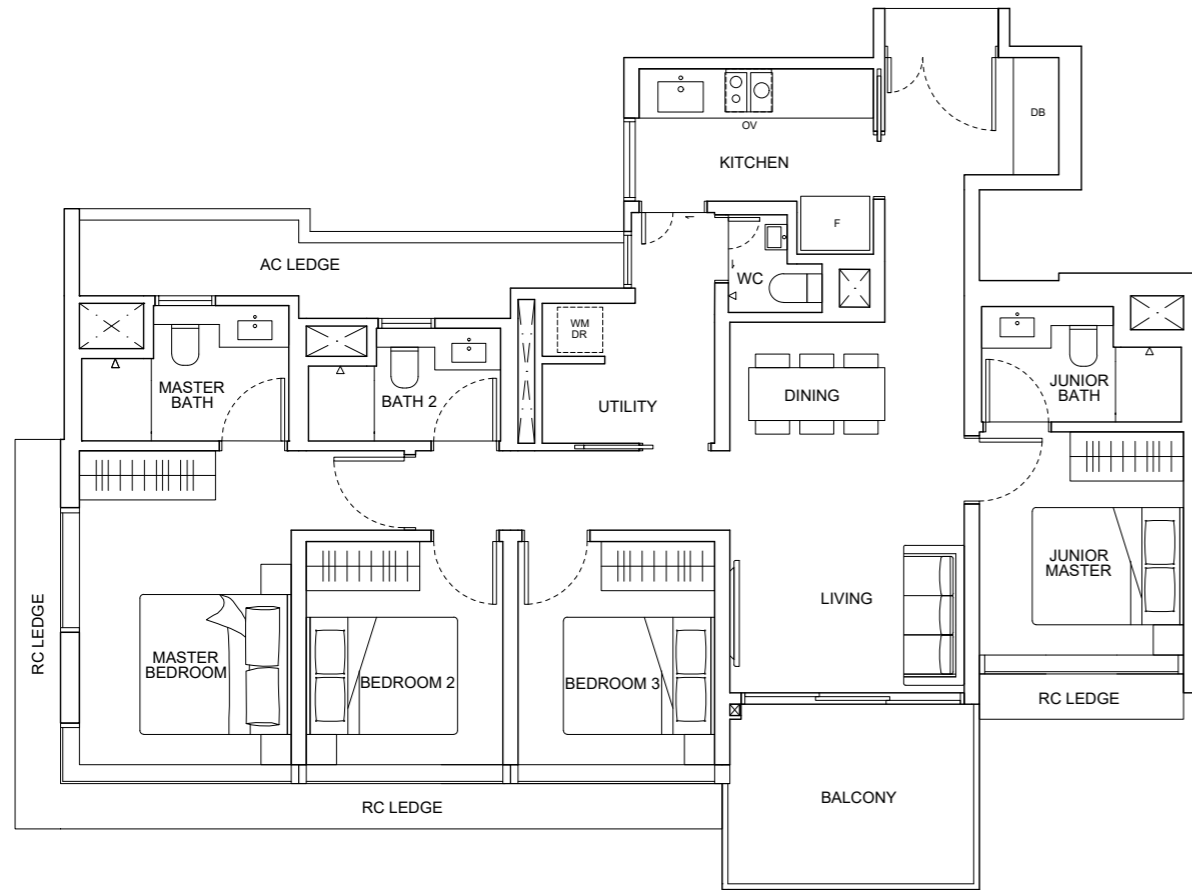
4-Bedroom

Type D1A

117 sqm / 1,259 sqft

Units

#02-03 to #12-03

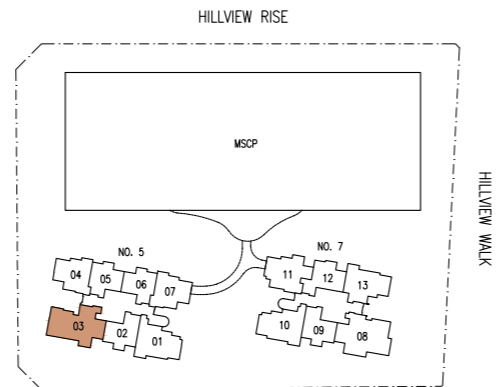


LEGEND

- DB Distribution Box
- F Fridge
- OV Oven
- WM Washing Machine
- DR Dryer



KEY PLAN
This key plan is not to scale



Disclaimer: The above plan is subject to any amendments as may be approved by the relevant authorities.

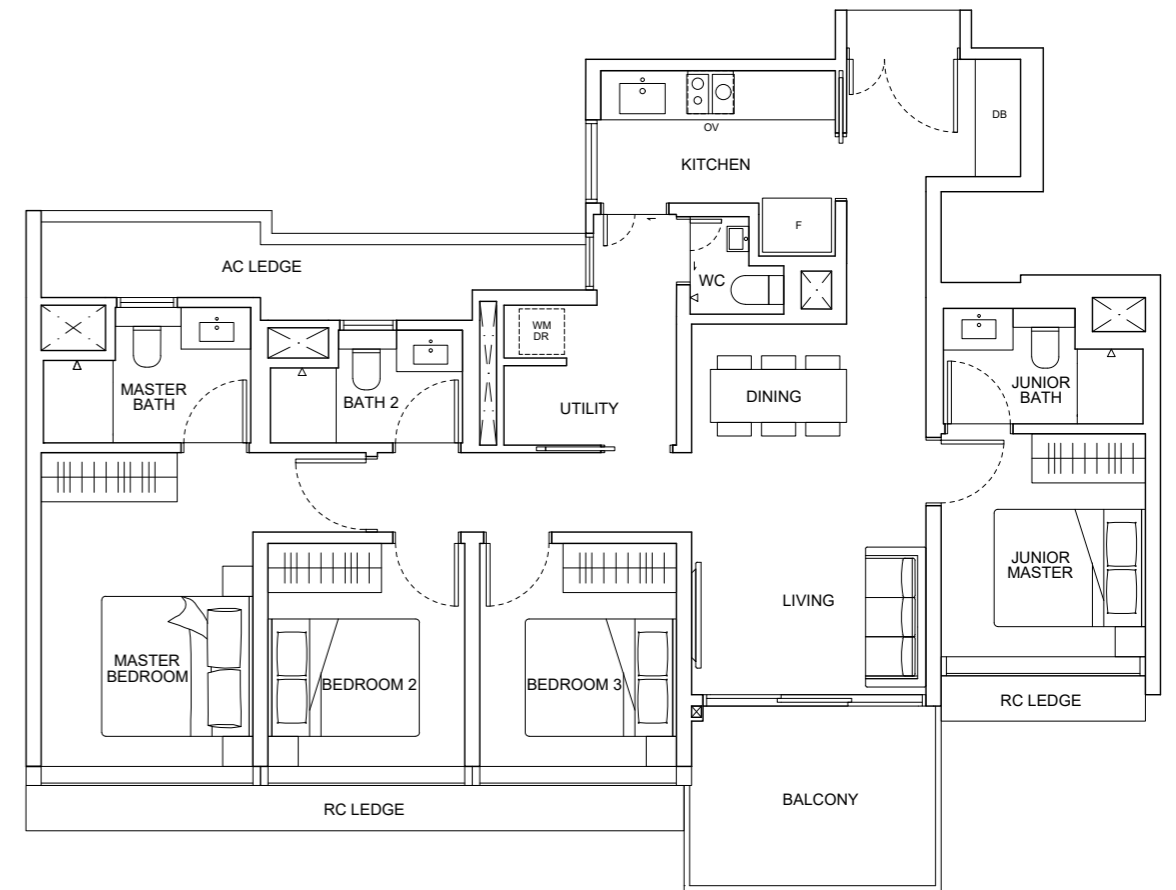
4-Bedroom

Type D1B

117 sqm / 1,259 sqft

Units

#13-03 to #26-03



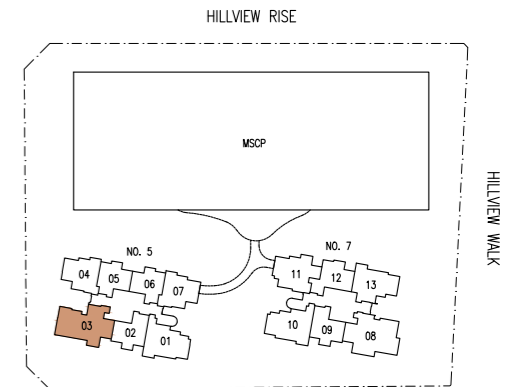
LEGEND

- DB Distribution Box
- F Fridge
- OV Oven
- WM Washing Machine
- DR Dryer



KEY PLAN
This key plan is not to scale

Disclaimer: The above plan is subject to any amendments as may be approved by the relevant authorities.



4-Bedroom

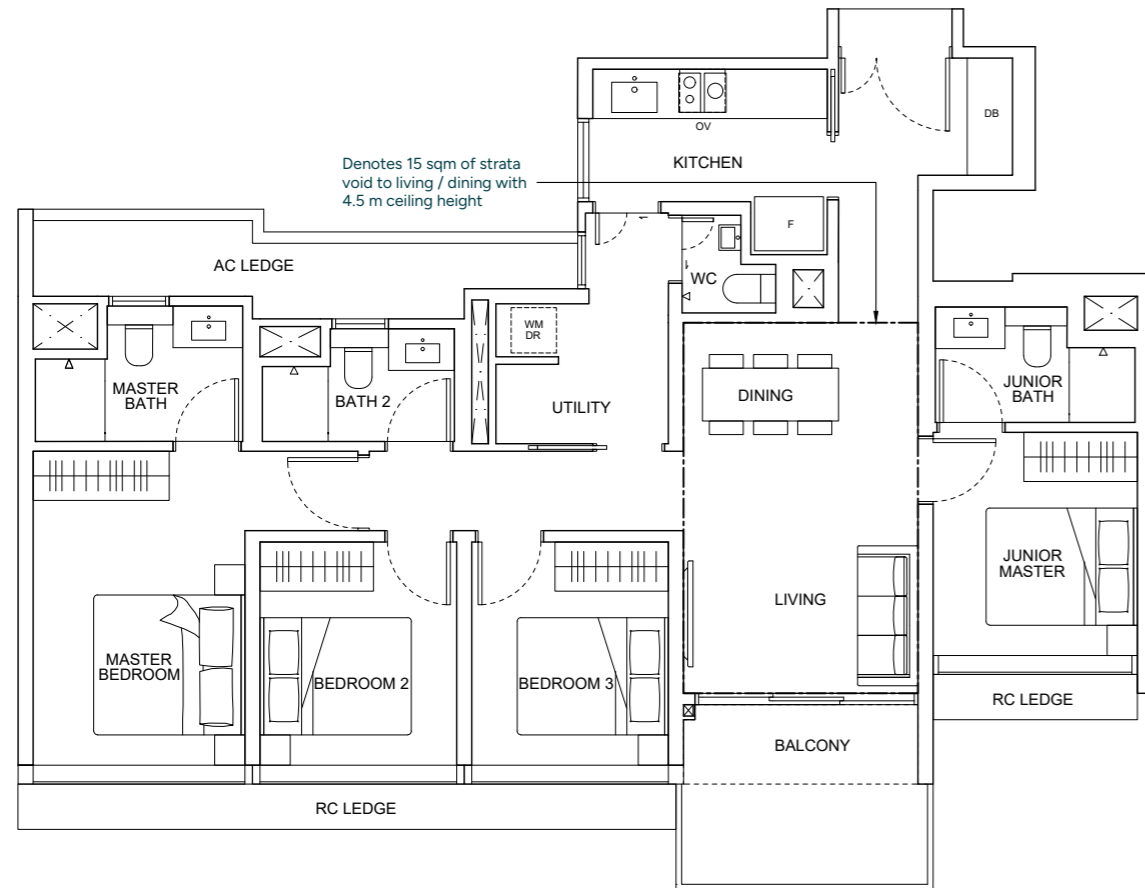
Type D1B(D)

133 sqm / 1,432 sqft

Includes 15 sqm of strata void to living / dining with 4.5 m ceiling height

Units

#27-03

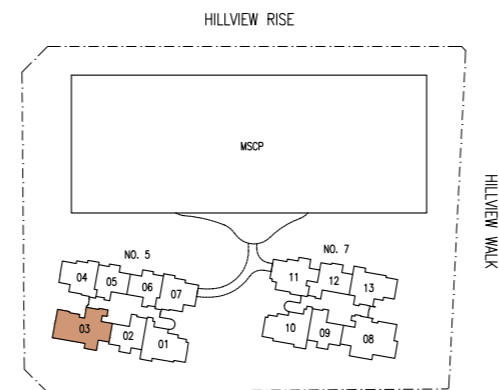


LEGEND

- DB Distribution Box
- F Fridge
- OV Oven
- WM Washing Machine
- DR Dryer



KEY PLAN
This key plan is not to scale



Disclaimer: The above plan is subject to any amendments as may be approved by the relevant authorities.

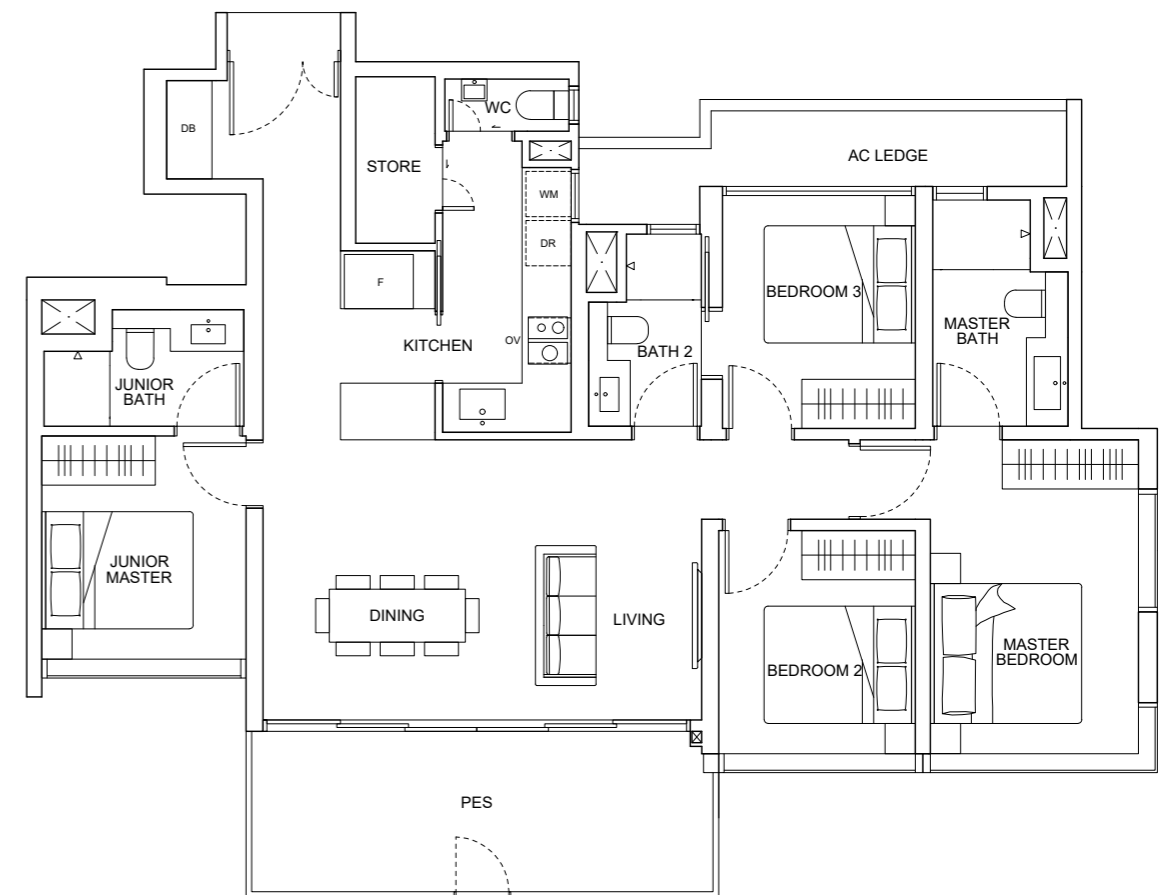
4-Bedroom

Type D2(P)

128 sqm / 1,378 sqft

Units

#01-08



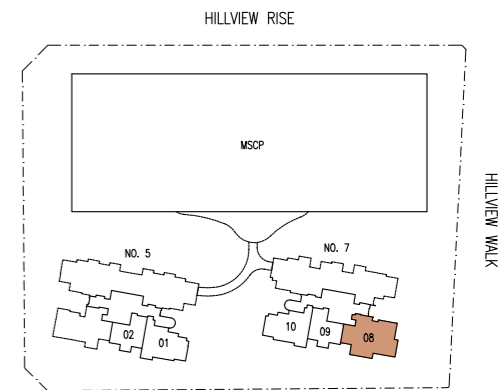
LEGEND

- DB Distribution Box
- F Fridge
- OV Oven
- WM Washing Machine
- DR Dryer



KEY PLAN
This key plan is not to scale

Disclaimer: The above plan is subject to any amendments as may be approved by the relevant authorities.



4-Bedroom

Type D2

128 sqm / 1,378 sqft

Units

#02-08 to #27-08

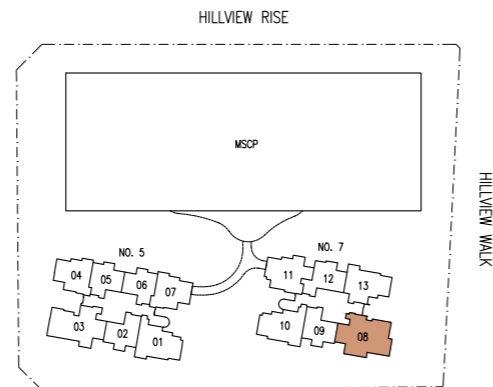


LEGEND

- DB Distribution Box
- F Fridge
- OV Oven
- WM Washing Machine
- DR Dryer



KEY PLAN
This key plan is not to scale



Disclaimer: The above plan is subject to any amendments as may be approved by the relevant authorities.

4-Bedroom

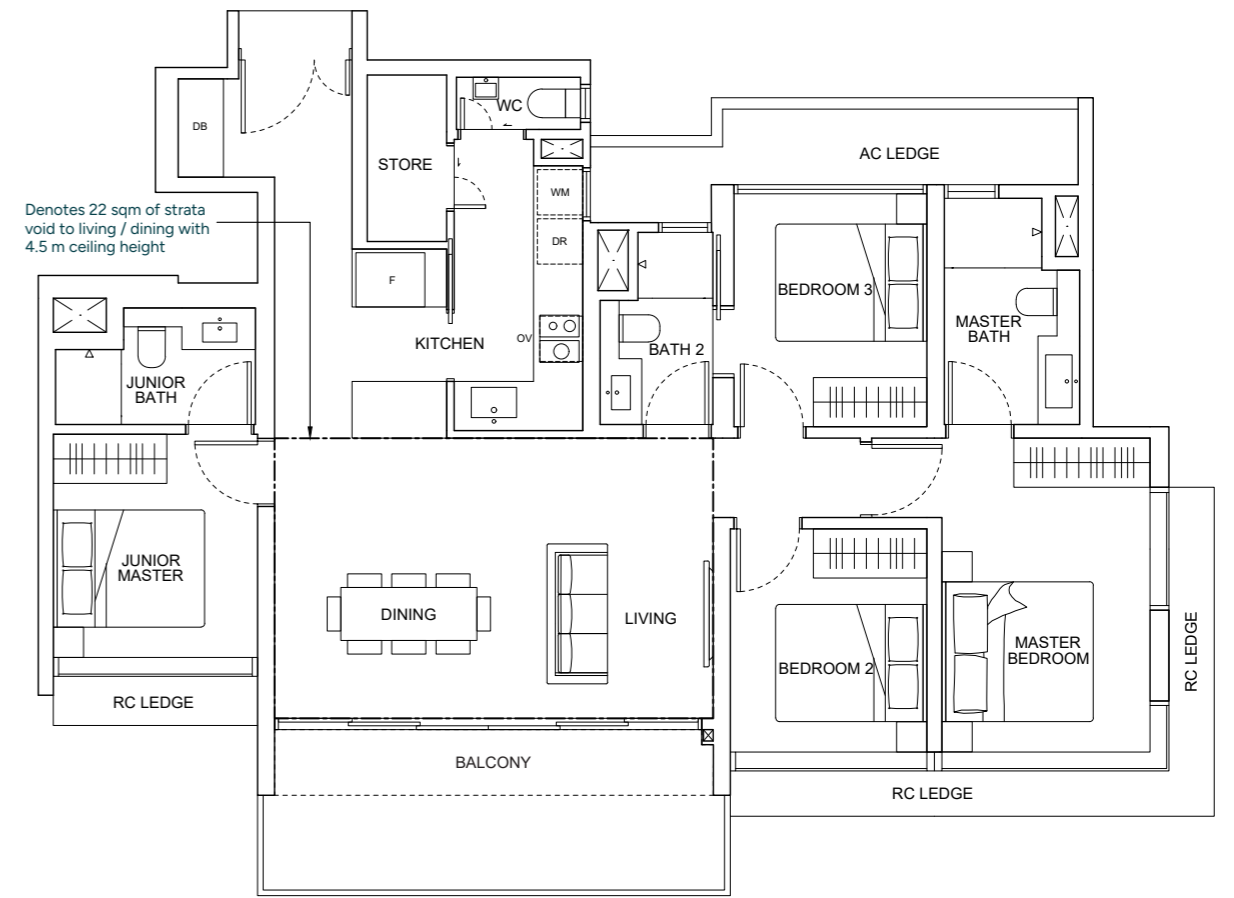
Type D2(D)

152 sqm / 1,636 sqft

Includes 22 sqm of strata void to living / dining with 4.5 m ceiling height

Units

#28-08

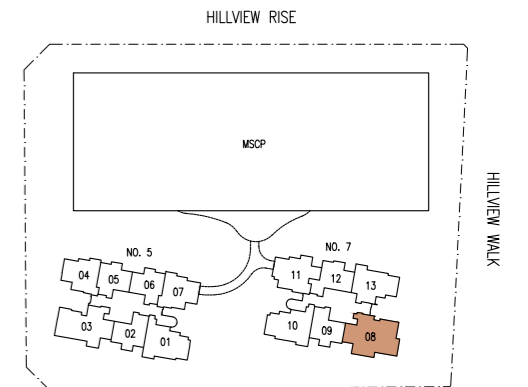


LEGEND

- DB Distribution Box
- F Fridge
- OV Oven
- WM Washing Machine
- DR Dryer

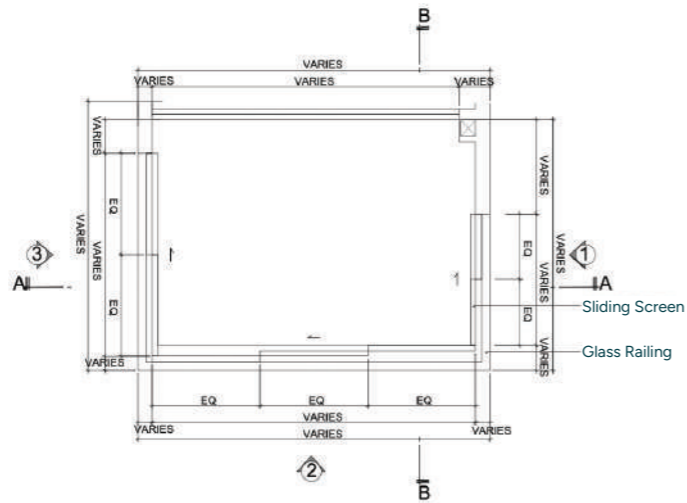


KEY PLAN
This key plan is not to scale

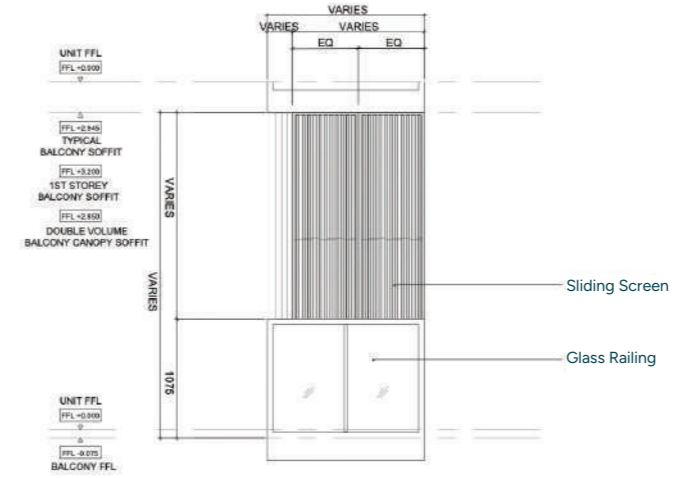


Disclaimer: The above plan is subject to any amendments as may be approved by the relevant authorities.

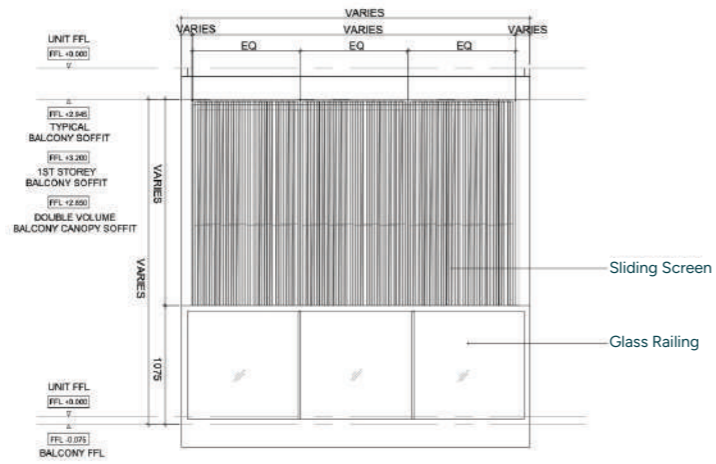
Balcony Screen



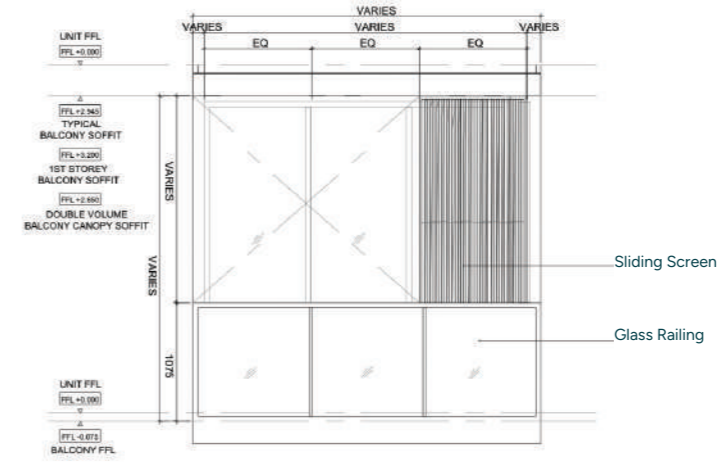
Typical Balcony Layout (Fully Closed)



Balcony Elevation 1 (Fully Closed)



Balcony Elevation 2 (Fully Closed)



Balcony Elevation 2 (Fully Retracted)

Note: The balcony (if any) and/or private enclosed space (if any) are not to be enclosed except with a balcony screen which has been approved and complies with the competent authorities' guidelines. The cost of screen and installation shall be at the purchaser's own cost and expense.



Founded in 1960, Sekisui House, Ltd. is one of world's largest homebuilders and an international diversified developer, with cumulative sales of over 2.6 Million homes. Based in Osaka, Sekisui House has over 300 consolidated subsidiaries and affiliates, over 29,000 employees and is listed on the Tokyo Stock Exchange and Nagoya Stock Exchange.

Sekisui House aims to create homes and communities that improve with time and last for generations. With "Love of Humanity" as its Corporate Philosophy, Sekisui House believes that homes should offer comfort, security and peace of mind for residents, while maintaining harmony with the environment and its surroundings. Sekisui House has sustainability as a core corporate target and is now the global leader in the construction of net-zero-energy houses with more than 70,000 of them built since the product was launched in 2013. In 2009, Sekisui House expanded into several new international markets and now operates in the United States, Australia, China, Singapore and the United Kingdom.

 sekisuihouse-global.com



Far East Organization is a Christian Enterprise, which develops real estate and operates businesses by serving with grace, love, integrity and honesty. Together with its Hong Kong-based sister company Sino Group, they are one of Asia's largest real estate groups, with operations in Singapore, Malaysia, Australia, Japan, China (Mainland and Hong Kong), Taiwan and USA.

Far East Organization is the largest private property developer in Singapore, having developed over 780 developments across all segments of real estate including 55,000 private homes in Singapore since its establishment in 1960. It includes three listed entities: Far East Orchard Limited, Far East Hospitality Trust and Yeo Hiap Seng Limited.

Far East Organization is the winner of 14 FIABCI World Prix d'Excellence awards, the highest honour in international real estate.

 fareast.com

DISCLAIMER: The information contained herein is subject to change and cannot form part of an offer or contract. While every reasonable care has been taken in providing this information, the developer or its agent cannot be held responsible for any inaccuracies. Whilst we believe the contents of this brochure to be correct and accurate at time of print, they are not to be regarded as statements or representations of fact. Illustrations in the brochure are artist's impressions, which serve only to give an approximate idea of the project. All artist's impressions and all plans are subject to any amendments as may be approved by the relevant authorities. The developer reserves the right to modify any parts of the building prior to project completion as approved or directed by the Planning Authorities or as the owner deems fit in its sole discretion. The developer reserves any and all copyright, design and other proprietary rights in and to this document (or any part thereof) including all or any part of the information, material or artwork contained therein. Unless otherwise expressly agreed to in writing, this document or any part thereof may not be copied, modified, distributed, reproduced or reused without the express written consent of the developer.

Developer: East Residences Pte. Ltd. (202034351G) • Licence No.: C1476 • Tenure: 99 years commencing from 13 February 2023 • Encumbrances: Mortgage No. IH/713736Q in favour of DBS Bank Ltd • Land Description: Lot No. 5170A of MK 10 at Hillview Rise • Expected Vacant Possession Date: 30 June 2028 • Expected Legal Completion Date: 30 June 2031

P1000/1223